

Product Catalog

GI ENDOSCOPY DEVICES & ACCESSORIES



MICRO-TECH (Nanjing) Co., Ltd.

No.10, Gaoke 3rd Road, National Hi-Tech Zone, Nanjing, China, 210032

Phone: +86-25-58646393 Fax: +86-25-58744269

E-Mail: sales@micro-tech.com.cn <http://micro-tech.com.cn/en/>



**Magnetic Resonance
Conditional**

¹Product with this symbol may be used in Magnetic Resonance environment according to the conditions described in Directions for Use.

CAUTION: Indications, Contraindications, Warnings and Instructions for Use can be found in the product labeling supplied with each device.



Contents



- Covered Esophageal Stents /04
- Softcup Esophageal Stents /06
- Anti-Reflux Esophageal Stents /08
- Cardia Stents /09
- Segmented Stents /11



- Tracheal/Bronchial Stents /21
- Y-Shape Tracheal Stents /23
- J-Shape Tracheal Stents /25



- Duodenal Stents /13



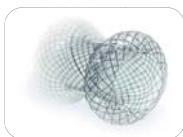
- Dilation Balloons /26
- Multi-Stage Dilation Balloons /31



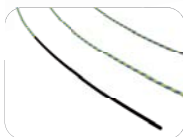
- Biliary Stents /15



- Hemoclips /34



- Pancreatic Pseudocyst Stents /17



- Guide Wire /35



- Colonic and Rectal Stents /18



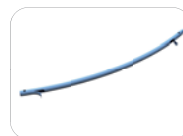
- Sphincterotome /36



- Stone Extraction Baskets /38
- Stone Extraction Balloons /39



- Indigo carmine /68



- Plastic Biliary Stents /40



- Disposable Cleaning Brushes /69
- Disposable Cytology Brushes /70
- Polyp Traps /71
- Disposable Bite Block /72
- Working Channel Valve /73
- Multiple Band Ligator Set /74



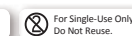
- Disposable Biopsy Forceps /58
- Disposable Hot Biopsy Forceps /61



- Grasping Forceps /62



- Polypectomy Snares /63
- Cold Snares /65
- Injection Needles /66

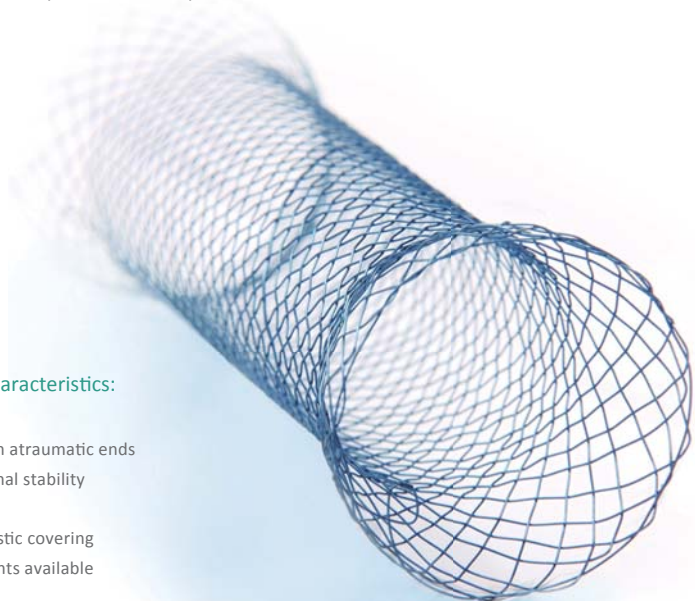


¹Product with this symbol may be used in Magnetic Resonance environment according to the conditions described in Directions for Use.

For further information, please contact your Micro-Tech Sales Representative or sales@micro-tech.com.cn

Covered Esophageal Stents

MICRO-TECH provides you with a comprehensive selection of self-expanding stents for bypassing esophageal stenoses. The stents are characterised by very high flexibility and are available with and without covering. The working diameter of the stent is 20, 24 or 28 mm; as regards the lengths, models of between 80 and 140 mm are available. The optimum solution is therefore always at hand for every indication.



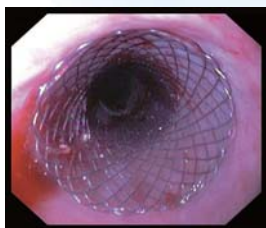
Performance Characteristics:

- self-expanding
- Nitinol mesh with atraumatic ends
- excellent positional stability
- high radial force
- resistant and elastic covering
- fully covered stents available
- high radiopacity
- extraction threads for removal and repositioning
- compatible guide-wire up to 0.035 inches

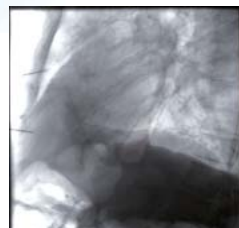
Successful in practical use

The stent adapts to the oesophageal wall in the best possible manner thanks to its atraumatic shape and high radial force. Furthermore, the stent possesses excellent radiopacity and can be positioned with good visibility and precision at significant points with the aid of the additional X-ray markings.

X-ray markings on the introducer indicate the ultimate position of the completely opened stent and assist its precise placement.



View of the proximal tulip



Released under X-ray

Specifications:

Standard esophageal stent non-covered



REF	Stent		Delivery System		Packaging
	Body O.D. (mm)	Expanded Length (mm)	Catheter O.D. (Fr/mm)	Working Length (mm)	
ST01-231-18.060	18	60	24/8	650	1/Box
ST01-231-18.080		80			
ST01-231-18.100		100			
ST01-231-18.120		120			
ST01-231-20.060	20	60			
ST01-231-20.080		80			
ST01-231-20.100		100			
ST01-231-20.120		120			

Standard esophageal stent partially-covered



REF	Stent		Delivery System		Packaging
	Body O.D. (mm)	Expanded Length (mm)	Catheter O.D. (Fr/mm)	Working Length (mm)	
ST01-232-18.060	18	60	24/8	650	1/Box
ST01-232-18.080		80			
ST01-232-18.100		100			
ST01-232-18.120		120			
ST01-232-20.060	20	60			
ST01-232-20.080		80			
ST01-232-20.100		100			
ST01-232-20.120		120			

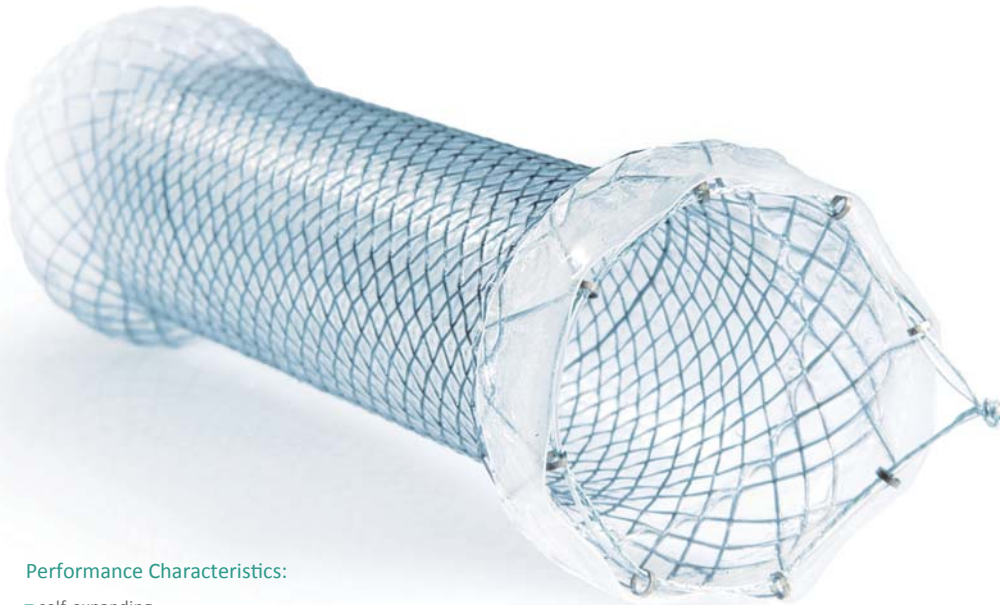
Standard esophageal stent fully-covered



REF	Stent		Delivery System		Packaging
	Body O.D. (mm)	Expanded Length (mm)	Catheter O.D. (Fr/mm)	Working Length (mm)	
ST01-234-18.060	18	60	24/8	650	1/Box
ST01-234-18.080		80			
ST01-234-18.100		100			
ST01-234-18.120		120			
ST01-234-20.060	20	60			
ST01-234-20.080		80			
ST01-234-20.100		100			
ST01-234-20.120		120			

Softcup esophageal stents

High-seated esophageal stenoses place special demands on the stent. Unpleasant irritative stress results for the patient owing to stent positioning in this extremely sensitive area just under the pharynx. The Softcup oesophagus stent from MICRO-TECH is equipped with a particularly soft proximal stent end, which makes the stent as pleasant as possible for the patient.



Performance Characteristics:

- self-expanding
- Nitinol mesh with atraumatic ends
- proximal Softcup design
- excellent positional stability
- high radial force
- resistant and elastic covering
- complete covering
- high radiopacity
- extraction threads for removal and repositioning
- compatible guide-wire up to 0.035 inches

Successful in practical use

The Softcup esophageal stent is completely covered and reduces the irritative stress for the patient with its particularly soft proximal tulip made of silicone. Its special design and the high radial force render the stent extremely positionally stable and guarantees a very snug fit on the esophageal wall. The good radiopacity and additional X-ray markings at significant points also facilitate orientation during stent placement.



View into the released stent



Released stent



Maximum hold, maximum comfort

The special design of the Softcup esophagus stent ensures excellent positional stability and is gentle on the patient at the same time: the soft end reduces the unpleasant sensation of carrying a foreign body in the esophagus.

Specifications:

Softcup esophageal stent

REF	Stent		Delivery System		Packaging
	Body O.D. (mm)	Expanded Length (mm)	Catheter O.D. (Fr/mm)	Working Length (mm)	
ST31-234-18.060	18	60	24/8	650	1/Box
ST31-234-18.080		80			
ST31-234-18.100		100			
ST31-234-18.120		120			
ST31-234-20.060	20	60			
ST31-234-20.080		80			
ST31-234-20.100		100			
ST31-234-20.120		120			

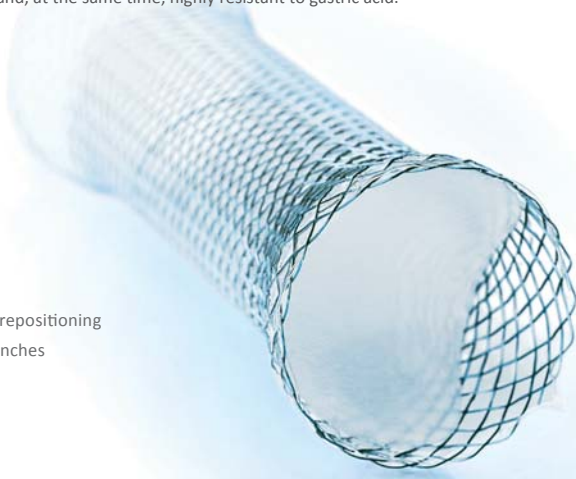
Anti-Reflux Esophageal Stents

Bypass of the cardia with a stent results in gastroesophageal reflux. In order to prevent the latter and thereby minimise the risk of bronchopulmonary aspirations, the Anti-Reflux Esophageal Stents from MICRO-TECH is equipped with a unique valve system.

The revolutionary aspect of the valve is its 2-way function which imitates the human protective mechanism perfectly. On the one hand, it allows food and liquids to enter the stomach unimpeded and reliably prevents reflux. On the other, it opens in the oral direction in case of excessive pressure. The patient can therefore obtain relief by vomiting in spite of the valve. The valve is particularly flexible and, at the same time, highly resistant to gastric acid.

Performance Characteristics:

- innovative 2-way valve system
- self-expanding
- Nitinol mesh with atraumatic ends
- excellent positional stability
- high radial force
- resistant and elastic covering
- high radiopacity
- extraction threads for removal and repositioning
- compatible guide-wire up to 0.035 inches



Specifications:

REF	Stent		Delivery System		Packaging
	Body O.D. (mm)	Expanded Length (mm)	Catheter O.D. (Fr/mm)	Working Length (mm)	
ST21-112-18.100	18	100	24/8	650	1/Box
ST21-112-20.100	20	100			

REF	Stent		Delivery System		Packaging
	Body O.D. (mm)	Expanded Length (mm)	Catheter O.D. (Fr/mm)	Working Length (mm)	
ST21-114-18.100	18	100	24/8	650	1/Box
ST21-114-20.100	20	100			

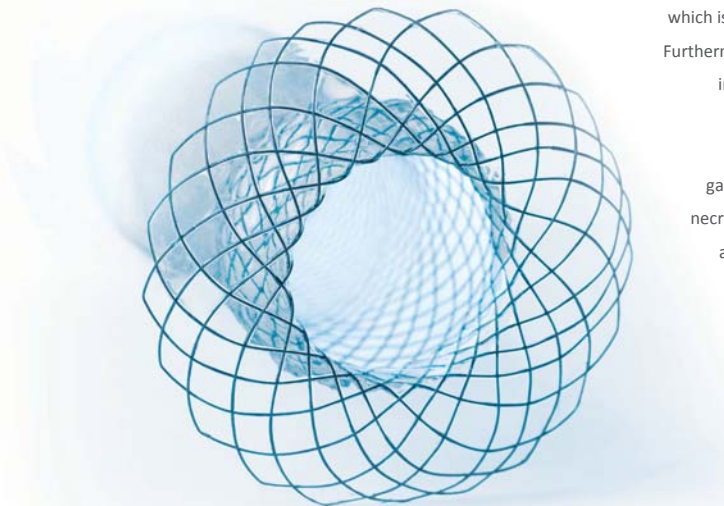
Cardia Stents

Treatment of the cardia is mainly associated with two complications. Firstly, the stent has an increased tendency to migrate at this point. Secondly, a stent end may protrude far into the stomach and cause pressure necrosis. The Cardia Stent by MICRO TECH is a specially designed stent perfectly tailored to this challenging anatomical diagnosis.

Its unique design gives the Cardia-Umbrella-Stent extremely high positional stability and prevents its migration in both the gastric and oral directions. The special feature here is the fact that the lower oesophageal sphincter lies between the

bulbous section and the distal end of the stent which is shaped like an opened umbrella.

Furthermore, the stent does not protrude into the stomach as a result of this umbrella-shaped design, ending directly behind the oesophageal gastric junction. The risk of pressure necrosis is thus markedly reduced and any potential patient discomfort is decreased.



Performance Characteristics:

- unique umbrella design
- self-expanding
- Nitinol mesh with atraumatic ends
- excellent positional stability
- high radial force
- resistant and elastic covering
- fully covered stents available
- high radiopacity
- extraction threads for removal and repositioning
- compatible guide-wire up to 0.035 inches



X-ray marking

Segmented Stents

Successful in practical use

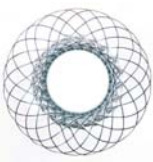
The inverse view from the stomach of the distal end of the stent shows how the umbrella end clings to the gastric mucosa directly behind the cardia without protruding into the stomach. From the perspective of the oesophagus into the stent, the bulge before the cardia and the shaping of the stent in the area of the cardia can be clearly distinguished. Both guarantee excellent positional stability for the stent.



View of the umbrella end (stomach)



View into the released stent (oesophagus)



Keeps its promises

Together with the high radial force, the spherical proximal end and the complete covering, the innovative umbrella design guarantees ideal hold in the area of the cardia. Radiopaque markers in prominent positions ease the placement of the stent under radiological view.

Specifications:

Cardia stent partially-covered

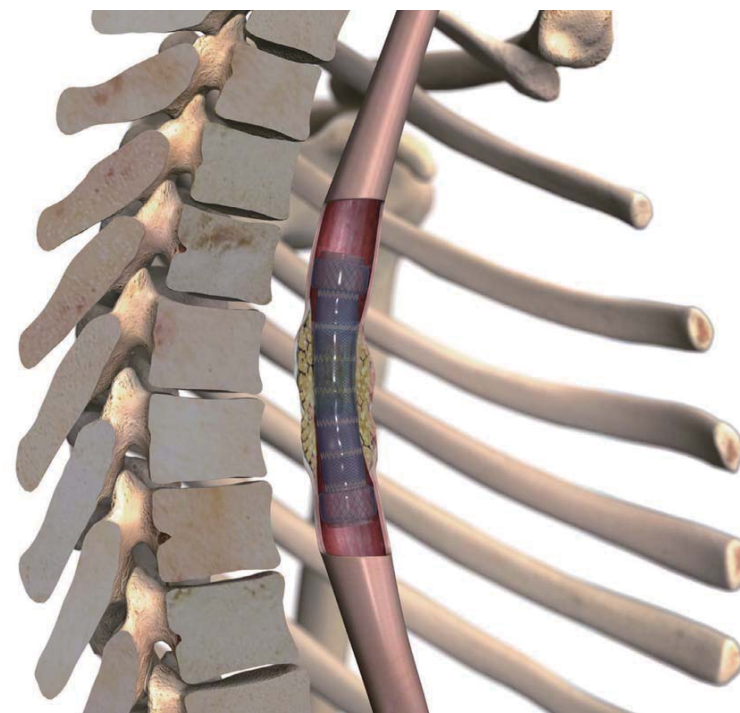


REF	Stent		Delivery System		Packaging
	Body O.D. (mm)	Expanded Length (mm)	Catheter O.D. (Fr/mm)	Working Length (mm)	
ST01-982-24.080	24	80	24/8	650	1/Box
ST01-982-24.100		100			
ST01-982-24.120		120			

Cardia stent fully-covered



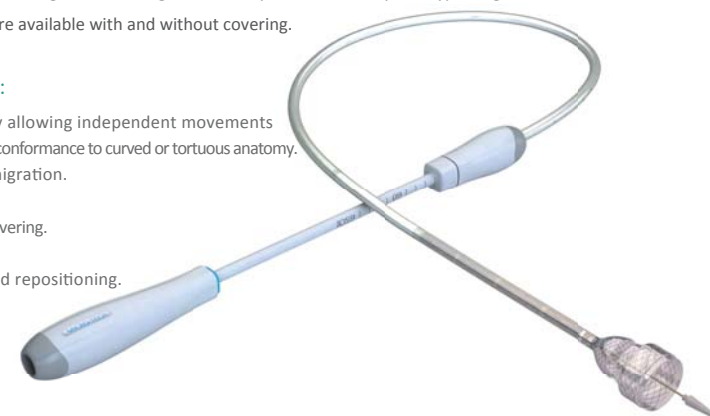
REF	Stent		Delivery System		Packaging
	Body O.D. (mm)	Expanded Length (mm)	Catheter O.D. (Fr/mm)	Working Length (mm)	
ST01-984-24.080	24	80	24/8	650	1/Box
ST01-984-24.100		100			
ST01-984-24.120		120			



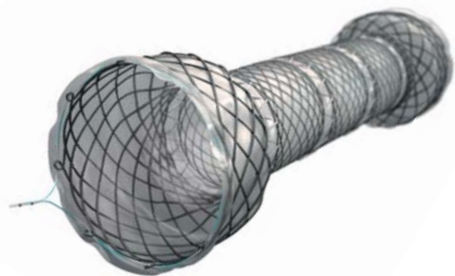
Esophageal Stents with segmented design to allow higher flexibility and conformity for bypassing esophageal stenoses. The stents are available with and without covering.

Performance Characteristics:

- Segmented modular stent body allowing independent movements between each module to maximize conformance to curved or tortuous anatomy.
- Segmented design minimizes migration.
- Comparable radial force.
- Corrosion resistant and elastic covering.
- Fully covered stents available.
- Retrieval suture for removal and repositioning.



Segmented design



Specifications:

Segmented esophageal stent



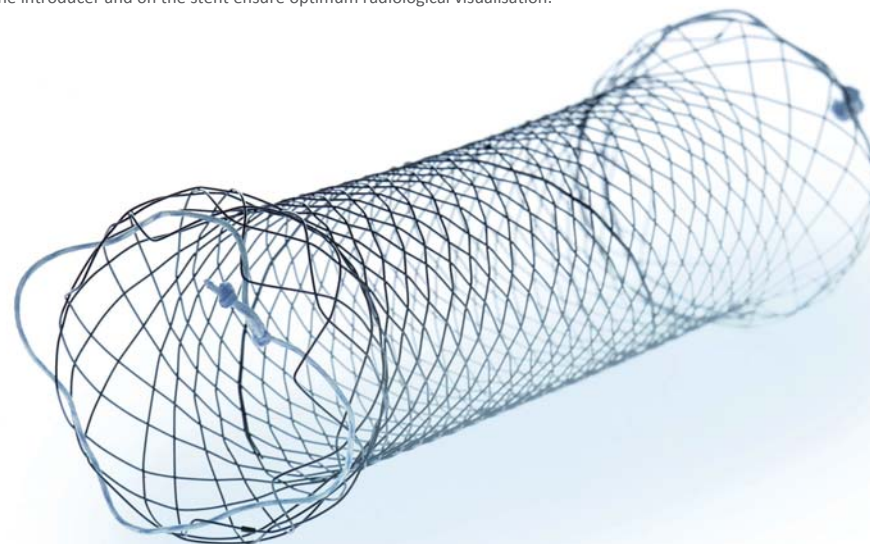
REF	Stent		Delivery System		Packaging
	Body O.D. (mm)	Expanded Length (mm)	Catheter O.D. (Fr/mm)	Working Length (mm)	
ST61-224-18.060	18	60	24/8	650	1/Box
ST61-224-18.080		80			
ST61-224-18.100		100			
ST61-224-18.120		120			
ST61-224-18.140		140			
ST61-224-20.060	20	60			
ST61-224-20.080		80			
ST61-224-20.100		100			
ST61-224-20.120		120			
ST61-224-20.140		140			

REF	Stent		Delivery System		Packaging
	Body O.D. (mm)	Expanded Length (mm)	Catheter O.D. (Fr/mm)	Working Length (mm)	
ST61-224-22.060	22	60	24/8	650	1/Box
ST61-224-22.080		80			
ST61-224-22.100		100			
ST61-224-22.120		120			
ST61-224-22.140		140			
ST61-224-24.060	24	60			
ST61-224-24.080		80			
ST61-224-24.100		100			
ST61-224-24.120		120			
ST61-224-24.140		140			

Duodenal Stents

The self-expanding Nitinol stents are used to bypass stenoses in the duodenum. Their spherical ends adapt perfectly to the anatomy of the duodenum, thereby guaranteeing maximum positional stability. Stents with and without covering are available depending on the indication.

The duodenal stent is preloaded on a TTS introducer (through-the scope) as standard. Insertion can therefore be performed through the working channel of the endoscope and the stent can be released under endoscopic observation. X-ray markings on the introducer and on the stent ensure optimum radiological visualisation.



Performance Characteristics:

- spherical ends
- self-expanding
- Nitinol mesh with atraumatic ends
- release under endoscopic observation
- excellent positional stability
- resistant and elastic covering
- high radiopacity
- extraction threads for removal and repositioning
- compatible guide-wire up to 0.035 inches



X-ray marking

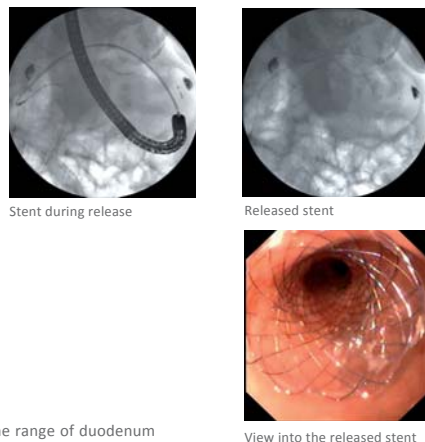
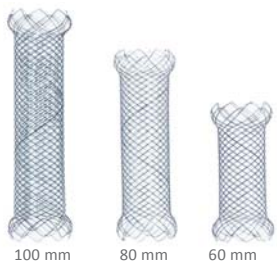


Extraction thread

Biliary Stents

Successful in practical use

The X-ray images show the release process under radiological monitoring. The good radiopacity plus additional X-ray markings on the stent assist orientation and facilitate the release of the duodenal stent. The endoscopic position control clarifies the stent's optimum expansion.



Always the appropriate solution

With a diameter of 20 mm and different lengths of 60, 80 or 100 mm, the range of duodenum stents always offers you the right size for your patient.

Specifications:

Duodenal stent non-covered

REF	Stent		Delivery System		Packaging
	Body O.D. (mm)	Expanded Length (mm)	Catheter O.D. (Fr/mm)	Working Length (mm)	
ST74-331-20.060	20	60	10/3.3	1800	1/Box
ST74-331-20.080		80			
ST74-331-20.100		100			

Duodenal stent partially-covered

REF	Stent		Delivery System		Packaging
	Body O.D. (mm)	Expanded Length (mm)	Catheter O.D. (Fr/mm)	Working Length (mm)	
ST74-332-20.060	20	60	10.5/3.5	1800	1/Box
ST74-332-20.080		80			
ST74-332-20.100		100			

Duodenal stent fully-covered

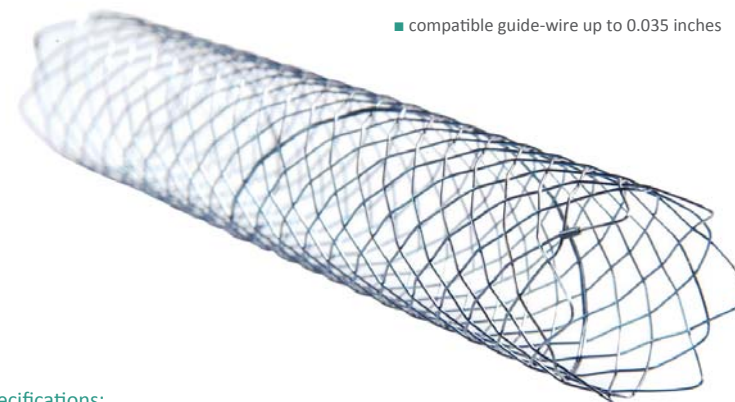
REF	Stent		Delivery System		Packaging
	Body O.D. (mm)	Expanded Length (mm)	Catheter O.D. (Fr/mm)	Working Length (mm)	
ST74-334-20.060	20	60	11/3.7	1800	1/Box
ST74-334-20.080		80			
ST74-334-20.100		100			



The Biliary Stent is preloaded on the delivery system for ERCP or PTCD. The stent for ERCP is placed through the working channel of the endoscope. The system is introduced into the biliary duct through the papilla under visual control.

Performance Characteristics:

- self-expanding
- available for TTS and PTCD
- Nitinol wire mesh with atraumatic ends
- release under visual endoscopic control
- excellent position stability
- high radiopacity
- compatible guide-wire up to 0.035 inches



Specifications:

Biliary stent non-covered

REF	Stent		Delivery System		Packaging
	Body O.D. (mm)	Expanded Length (mm)	Catheter O.D. (Fr/mm)	Working Length (mm)	
ST03-001-10.040	10	40	8/2.7	1800	1/Box
ST03-001-10.060		60			
ST03-001-10.080		80			
ST03-001-10.100		100			

Biliary stent partially-covered



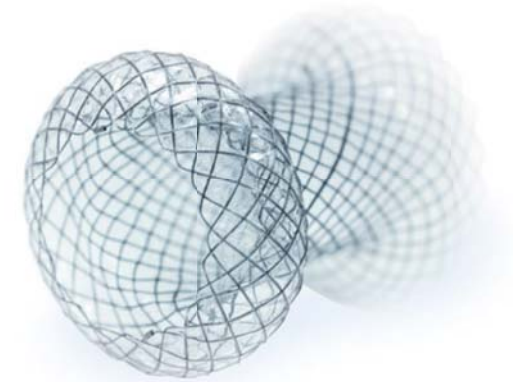
REF	Stent		Delivery System		Packaging
	Body O.D. (mm)	Expanded Length (mm)	Catheter O.D. (Fr/mm)	Working Length (mm)	
ST03-002-10.040	10	40	9/3.0	1800	1/Box
ST03-002-10.060		60			
ST03-002-10.080		80			
ST03-002-10.100		100			

Biliary stent fully-covered



REF	Stent		Delivery System		Packaging
	Body O.D. (mm)	Expanded Length (mm)	Catheter O.D. (Fr/mm)	Working Length (mm)	
ST03-004-10.040	10	40	9/3.0	1800	1/Box
ST03-004-10.050		50			
ST03-004-10.060		60			
ST03-004-10.080		80			
ST03-004-10.100		100			

Pancreatic Pseudocyst Stents



Performance Characteristics:

- new bridge between gastrointestinal lumen and pancreas
- self-expanding stent with mashronn and umbrella ends, more safety (mashroom avoid the stent dropping into the pancreas, umbrella for easy-retrieval)
- special safe lock to ensure the release process in the safe condition
- fully covering, to prevent the hyperplasia
- innovative drainage method, less complication, higher efficiency

Specifications:

Pancreatic Pseudocyst Stent



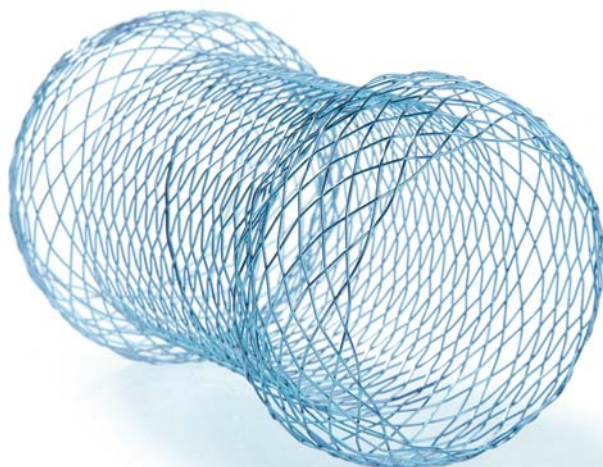
REF	Stent		Delivery System		Packaging
	Body O.D. (mm)	Expanded Length (mm)	Catheter O.D. (Fr/mm)	Working Length (mm)	
ST33-544-10.015	10	15	10.5/3.5	1800	1/Box
ST33-544-10.020		20			
ST33-544-10.025		25			
ST33-544-10.030	30				
ST33-544-12.015	12	15			
ST33-544-12.020		20			
ST33-544-12.025		25			
ST33-544-12.030	30				
ST33-544-14.015	14	15			
ST33-544-14.020		20			
ST33-544-14.025		25			
ST33-544-14.030	30				
ST33-544-16.015	16	15			
ST33-544-16.020		20			
ST33-544-16.025		25			
ST33-544-16.030		30			

Colonic and Rectal Stents

Colonic stents demand a particularly high positional stability. The OTW colon and rectum stents of MICRO-TECH have a design that guarantees just that. The good hold of the OTW colonic stents is achieved by a square-edged transition situated near each end of the stent. This virtually anchors the stent inside the lumen and adapts it optimally to the anatomy and peristalsis of the colon.

In contrast, rectal stents are less stimulating and ball-shaped. This ensures that the patient senses less irritations in this sensitive area, thus distinctly increasing the quality of life.

The partially sheathed OTW colonic and rectal stents produce very high radial forces. They should therefore be placed into straight segments of the colon, and not into the bent segments, such as the right and left flexure of the colon.



Performance Characteristics:

- self-expanding
- Nitinol mesh with atraumatic ends
- anatomical design
- excellent positional stability
- high radial force
- resistant and elastic covering
- high radiopacity
- extraction threads for removal and repositioning
- compatible guide-wire up to 0.035 inches
- also available as TTS systems



Spherical end



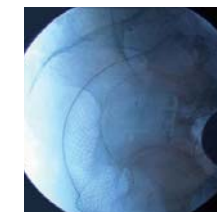
Mushroom design

Successful in practical use

The stents are convincing in practice by the good opening behaviour and the special distinctive end shape of the colon stent with which the stents can be firmly anchored in the semilunar folds of the colon. In order to facilitate orientation during release, the stents have additional X-ray markings at all significant points.



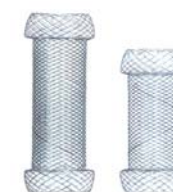
Control with contrast medium



Released colonic stent

Positionally stable in all sizes

The colon and rectum stents are available in a length of either 80 mm or 100 mm. You can also choose between non-covered and partially covered versions.



Colon stents



Rectum stents

Specifications:

Colonic and rectal stent non-covered (Colonic)



REF	Stent		Delivery System		Packaging
	Body O.D. (mm)	Expanded Length (mm)	Catheter O.D. (Fr/mm)	Working Length (mm)	
ST64-331-24.080	24	80	10/3.3	2300	1/Box
ST64-331-24.100		100			
ST64-331-26.080	26	80			
ST64-331-26.100		100			

Colonic and rectal stent non-covered (Rectal)



REF	Stent		Delivery System		Packaging
	Body O.D. (mm)	Expanded Length (mm)	Catheter O.D. (Fr/mm)	Working Length (mm)	
ST44-331-24.080	24	80	24/8	650	1/Box
ST44-331-24.100		100			
ST44-331-26.080	26	80			
ST44-331-26.100		100			

Colonic and rectal stent partially-covered (Colonic)



REF	Stent		Delivery System		Packaging
	Body O.D. (mm)	Expanded Length (mm)	Catheter O.D. (Fr/mm)	Working Length (mm)	
ST64-332-24.080	24	80	10.5/3.5	2300	1/Box
ST64-332-24.100		100			
ST64-332-26.080	26	80			
ST64-332-26.100		100			

Colonic and rectal stent partially-covered (Rectal)



REF	Stent		Delivery System		Packaging
	Body O.D. (mm)	Expanded Length (mm)	Catheter O.D. (Fr/mm)	Working Length (mm)	
ST44-332-24.080	24	80	24/8	650	1/Box
ST44-332-24.100		100			
ST44-332-26.080	26	80			
ST44-332-26.100		100			

Colonic and rectal stent fully-covered (Colonic)



REF	Stent		Delivery System		Packaging
	Body O.D. (mm)	Expanded Length (mm)	Catheter O.D. (Fr/mm)	Working Length (mm)	
ST34-334-24.080	24	80	24/8	1100	1/Box
ST34-334-24.100		100			
ST34-334-26.080	26	80			
ST34-334-26.100		100			

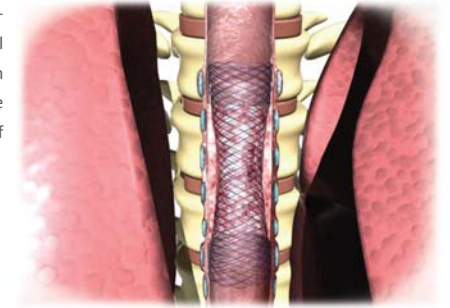
Colonic and rectal stent fully-covered (Rectal)



REF	Stent		Delivery System		Packaging
	Body O.D. (mm)	Expanded Length (mm)	Catheter O.D. (Fr/mm)	Working Length (mm)	
ST44-334-24.080	24	80	24/8	650	1/Box
ST44-334-24.100		100			
ST44-334-26.080	26	80			
ST44-334-26.100		100			

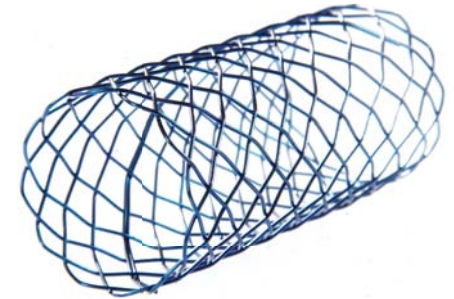
Tracheal/Bronchial Stents

The highly varied selection of self-expanding stents for the respiratory tracts offers you the right solution for every indication. All in all, seven different diameters between 8 and 20 mm in addition to six different lengths of between 20 to 80 mm are available. Spherical ends in addition to the high radial force of the stent ensure a firm hold and minimise migration risk.



Performance Characteristics:

- self-expanding
- Nitinol mesh with atraumatic ends
- excellent positional stability
- high radial force
- resistant and elastic covering
- fully covered stents available
- high radiopacity
- compatible guide-wire up to 0.035 inches



Specifications:

Tracheal stent non-covered



REF	Stent		Delivery System		Packaging
	Body O.D. (mm)	Expanded Length (mm)	Catheter O.D. (Fr/mm)	Working Length (mm)	
ST02-331-14.040	14	40	18/6.0	650	1/Box
ST02-331-14.050		50			
ST02-331-14.060		60			
ST02-331-16.040	16	40			
ST02-331-16.050		50			
ST02-331-16.060		60			

Tracheal stent partially-covered



REF	Stent		Delivery System		Packaging
	Body O.D. (mm)	Expanded Length (mm)	Catheter O.D. (Fr/mm)	Working Length (mm)	
ST02-332-14.040	14	40	18/6.0	650	1/Box
ST02-332-14.050		50			
ST02-332-14.060		60			
ST02-332-16.040	16	40			
ST02-332-16.050		50			
ST02-332-16.060		60			

Tracheal stent fully-covered

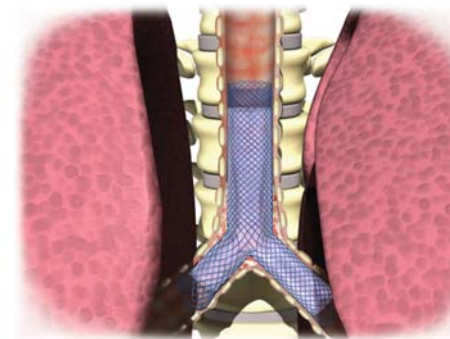


REF	Stent		Delivery System		Packaging
	Body O.D. (mm)	Expanded Length (mm)	Catheter O.D. (Fr/mm)	Working Length (mm)	
ST02-334-14.040	14	40	18/6.0	650	1/Box
ST02-334-14.050		50			
ST02-334-14.060		60			
ST02-334-16.040	16	40			
ST02-334-16.050		50			
ST02-334-16.060		60			

Y-Shape Tracheal Stents

A world innovation.

MICRO-TECH is the world's first company to present a self-expanding Y-stent for bypassing respiratory tract stenoses in the area around the carina. Its innovative design ensures a stable position and guarantees significant treatment advances in the trachea and in both main bronchi.



Performance Characteristics:

- Y-design
- self-expanding
- Nitinol mesh with atraumatic ends
- excellent positional stability
- high radial force
- resistant and elastic covering
- high radiopacity
- compatible guide-wire up to 0.035 inches

Specifications:

Y-shape tracheal stent non-covered



REF	Stent		Delivery System		Packaging
	Body O.D. (mm)	Expanded Length (mm)	Catheter O.D. (Fr/mm)	Working Length (mm)	
ST02-961-18.050	18	50	24/8	650	1/Box
ST02-961-18.060		60			

Y-shape tracheal stent partially-covered MIR

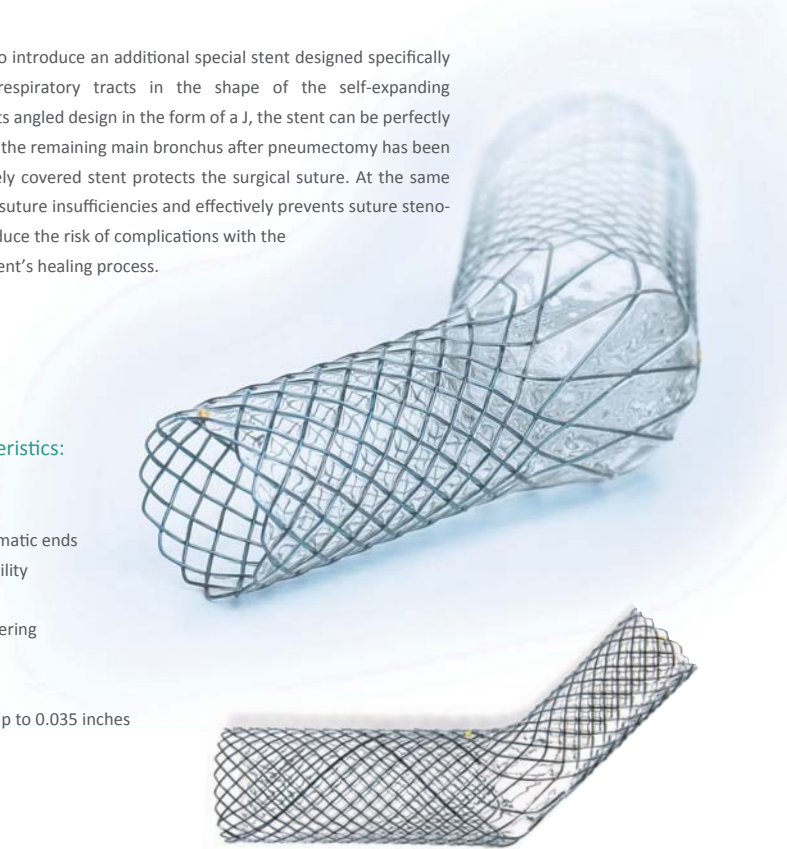
REF	Stent		Delivery System		Packaging
	Body O.D. (mm)	Expanded Length (mm)	Catheter O.D. (Fr/mm)	Working Length (mm)	
ST02-962-18.050	18	50	24/8	650	1/Box
ST02-962-18.060		60			

Y-shape tracheal stent fully-covered MIR

REF	Stent		Delivery System		Packaging
	Body O.D. (mm)	Expanded Length (mm)	Catheter O.D. (Fr/mm)	Working Length (mm)	
ST02-964-18.050	18	50	24/8	650	1/Box
ST02-964-18.060		60			

J-Shape Tracheal Stents

MICRO-TECH would like to introduce an additional special stent designed specifically for treatment of the respiratory tracts in the shape of the self-expanding Carina-J-Stent. Owing to its angled design in the form of a J, the stent can be perfectly placed in the trachea and the remaining main bronchus after pneumectomy has been performed. The completely covered stent protects the surgical suture. At the same time, it seals any existing suture insufficiencies and effectively prevents suture stenoses. You can therefore reduce the risk of complications with the J-stent and assist the patient's healing process.



Performance Characteristics:

- angled J-design
- self-expanding
- Nitinol mesh with atraumatic ends
- excellent positional stability
- high radial force
- resistant and elastic covering
- complete covering
- high radiopacity
- compatible guide-wire up to 0.035 inches

Specifications:

J-shape tracheal stent fully-covered MIR

REF	Stent		Delivery System		Packaging
	Body O.D. (mm)	Expanded Length (mm)	Catheter O.D. (Fr/mm)	Working Length (mm)	
ST02-974-16.040	16	40	18/6.0	650	1/Box
ST02-974-16.050		50			

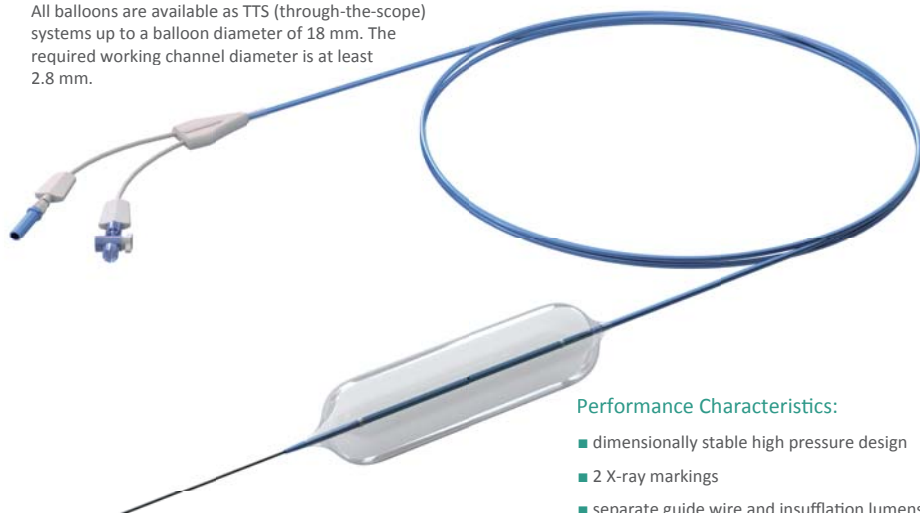
Dilation Balloons

As regards manufacture, MICRO-TECH produces all the dilation balloons itself – using state-of-the-art European and American production technology. Excellent workmanship and the use of premium materials, ensure that the MICRO-TECH balloons achieve the highest possible quality standard.

MICRO-TECH's dilation is also top of the range. The balloons are characterised by a series of features which guarantee maximum therapeutic success. For instance, two X-ray markings indicate the precise working length of the balloon, thereby ensuring its precise positioning.

Under application of pressure, the balloon very rapidly acquires its precisely predefined expansion width. Furthermore, the high-pressure design ensures that the balloon retains its shape over the entire working length, thereby allowing optimum dilation success.

All balloons are available as TTS (through-the-scope) systems up to a balloon diameter of 18 mm. The required working channel diameter is at least 2.8 mm.



Performance Characteristics:

- dimensionally stable high pressure design
- 2 X-ray markings
- separate guide wire and insufflation lumens
- conical shaped catheter tip
- very rapid expansion
- guide-wire compatible up to 0.035 inches

Successful in practical use.

Stenoses are effectively dilated using the MICRO-TECH dilation balloons. The balloon dilates the stenosis safely and gently and prepares the area to be treated in an optimum manner. The uniform distribution of pressure over the entire working length of the balloon and the outstanding dimensional stability during dilation guarantee excellent therapeutic success over the entire length of the stenosis.



Endoscopic control during dilation therapy

Specifications:

Wire guided single stage balloons – 30/100

REF	Balloon Inflated O.D.		Balloon Length (mm)	Inflation Pressures		Channel Size (mm)	Catheter Size		Working Length (cm)	Packaging
	(mm)	(Fr)		(atm)	(kPa)		(mm)	(Fr)		
BDC-6/30-7/10-A	6	18	30	8	810	≥φ2.8	2.3	7	100	1/Box
BDC-8/30-7/10-A	8	24	30	8	810	≥φ2.8	2.3	7	100	1/Box
BDC-10/30-7/10-A	10	30	30	8	810	≥φ2.8	2.3	7	100	1/Box
BDC-12/30-7/10-A	12	36	30	6	608	≥φ2.8	2.3	7	100	1/Box
BDC-15/30-7/10-A	15	45	30	5	507	≥φ2.8	2.3	7	100	1/Box
BDC-16/30-7/10-A	16	48	30	5	507	≥φ2.8	2.3	7	100	1/Box
BDC-18/30-7/10-A	18	54	30	4	405	≥φ2.8	2.3	7	100	1/Box

Wire guided single stage balloons – 30/180

REF	Balloon Inflated O.D.		Balloon Length (mm)	Inflation Pressures		Channel Size (mm)	Catheter Size		Working Length (cm)	Packaging
	(mm)	(Fr)		(atm)	(kPa)		(mm)	(Fr)		
BDC-6/30-7/18-A	6	18	30	8	810	≥φ2.8	2.3	7	180	1/Box
BDC-8/30-7/18-A	8	24	30	8	810	≥φ2.8	2.3	7	180	1/Box
BDC-10/30-7/18-A	10	30	30	8	810	≥φ2.8	2.3	7	180	1/Box
BDC-12/30-7/18-A	12	36	30	6	608	≥φ2.8	2.3	7	180	1/Box
BDC-15/30-7/18-A	15	45	30	5	507	≥φ2.8	2.3	7	180	1/Box
BDC-16/30-7/18-A	16	48	30	5	507	≥φ2.8	2.3	7	180	1/Box
BDC-18/30-7/18-A	18	54	30	4	405	≥φ2.8	2.3	7	180	1/Box

Wire guided single stage balloons – 30/240

REF	Balloon Inflated O.D.		Balloon Length (mm)	Inflation Pressures		Channel Size (mm)	Catheter Size		Working Length (cm)	Packaging
	(mm)	(Fr)		(atm)	(kPa)		(mm)	(Fr)		
BDC-6/30-7/24-A	6	18	30	8	810	≥φ2.8	2.3	7	240	1/Box
BDC-8/30-7/24-A	8	24	30	8	810	≥φ2.8	2.3	7	240	1/Box
BDC-10/30-7/24-A	10	30	30	8	810	≥φ2.8	2.3	7	240	1/Box
BDC-12/30-7/24-A	12	36	30	6	608	≥φ2.8	2.3	7	240	1/Box
BDC-15/30-7/24-A	15	45	30	5	507	≥φ2.8	2.3	7	240	1/Box
BDC-16/30-7/24-A	16	48	30	5	507	≥φ2.8	2.3	7	240	1/Box
BDC-18/30-7/24-A	18	54	30	4	405	≥φ2.8	2.3	7	240	1/Box

Wire guided single stage balloons – 55/100

REF	Balloon Inflated O.D.		Balloon Length (mm)	Inflation Pressures		Channel Size (mm)	Catheter Size		Working Length (cm)	Packaging
	(mm)	(Fr)		(atm)	(kPa)		(mm)	(Fr)		
BDC-6/55-7/10-A	6	18	55	8	810	≥φ2.8	2.3	7	100	1/Box
BDC-8/55-7/10-A	8	24	55	8	810	≥φ2.8	2.3	7	100	1/Box
BDC-10/55-7/10-A	10	30	55	8	810	≥φ2.8	2.3	7	100	1/Box
BDC-12/55-7/10-A	12	36	55	6	608	≥φ2.8	2.3	7	100	1/Box
BDC-14/55-7/10-A	14	42	55	5	507	≥φ2.8	2.3	7	100	1/Box
BDC-15/55-7/10-A	15	45	55	5	507	≥φ2.8	2.3	7	100	1/Box
BDC-16/55-7/10-A	16	48	55	5	507	≥φ2.8	2.3	7	100	1/Box
BDC-18/55-7/10-A	18	54	55	4	405	≥φ2.8	2.3	7	100	1/Box
BDC-20/55-7/10-A	20	60	55	4	405	N/A	2.3	7	100	1/Box

Wire guided single stage balloons – 55/180

REF	Balloon Inflated O.D.		Balloon Length (mm)	Inflation Pressures		Channel Size (mm)	Catheter Size		Working Length (cm)	Packaging
	(mm)	(Fr)		(atm)	(kPa)		(mm)	(Fr)		
BDC-6/55-7/18-A	φ6	φ18	55	8	810	≥φ2.8	φ2.3	φ7	180	1/Box
BDC-8/55-7/18-A	φ8	φ24	55	8	810	≥φ2.8	φ2.3	φ7	180	1/Box
BDC-10/55-7/18-A	φ10	φ30	55	8	810	≥φ2.8	φ2.3	φ7	180	1/Box
BDC-12/55-7/18-A	φ12	φ36	55	6	608	≥φ2.8	φ2.3	φ7	180	1/Box
BDC-14/55-7/18-A	φ14	φ42	55	5	507	≥φ2.8	φ2.3	φ7	180	1/Box
BDC-15/55-7/18-A	φ15	φ45	55	5	507	≥φ2.8	φ2.3	φ7	180	1/Box
BDC-16/55-7/18-A	φ16	φ48	55	5	507	≥φ2.8	φ2.3	φ7	180	1/Box
BDC-18/55-7/18-A	φ18	φ54	55	4	405	≥φ2.8	φ2.3	φ7	180	1/Box
BDC-20/55-7/18-A	φ20	φ60	55	4	405	N/A	φ2.3	φ7	180	1/Box

Wire guided single stage balloons – 55/240

REF	Balloon Inflated O.D.		Balloon Length (mm)	Inflation Pressures		Channel Size (mm)	Catheter Size		Working Length (cm)	Packaging
	(mm)	(Fr)		(atm)	(kPa)		(mm)	(Fr)		
BDC-6/55-7/24-A	6	18	55	8	810	≥φ2.8	2.3	7	240	1/Box
BDC-8/55-7/24-A	8	24	55	8	810	≥φ2.8	2.3	7	240	1/Box
BDC-10/55-7/24-A	10	30	55	8	810	≥φ2.8	2.3	7	240	1/Box
BDC-12/55-7/24-A	12	36	55	6	608	≥φ2.8	2.3	7	240	1/Box
BDC-14/55-7/24-A	14	42	55	5	507	≥φ2.8	2.3	7	240	1/Box
BDC-15/55-7/24-A	15	45	55	5	507	≥φ2.8	2.3	7	240	1/Box
BDC-16/55-7/24-A	16	48	55	5	507	≥φ2.8	2.3	7	240	1/Box
BDC-18/55-7/24-A	18	54	55	4	405	≥φ2.8	2.3	7	240	1/Box
BDC-20/55-7/24-A	20	60	55	4	405	N/A	2.3	7	240	1/Box

Wire guided single stage balloons – 80/100

REF	Balloon Inflated O.D.		Balloon Length (mm)	Inflation Pressures		Channel Size (mm)	Catheter Size		Working Length (cm)	Packaging
	(mm)	(Fr)		(atm)	(kPa)		(mm)	(Fr)		
BDC-6/80-7/10-A	6	18	80	8	810	≥φ2.8	2.3	7	100	1/Box
BDC-8/80-7/10-A	8	24	80	8	810	≥φ2.8	2.3	7	100	1/Box
BDC-10/80-7/10-A	10	30	80	8	810	≥φ2.8	2.3	7	100	1/Box
BDC-12/80-7/10-A	12	36	80	6	608	≥φ2.8	2.3	7	100	1/Box
BDC-14/80-7/10-A	14	42	80	5	507	≥φ2.8	2.3	7	100	1/Box
BDC-15/80-7/10-A	15	45	80	5	507	≥φ2.8	2.3	7	100	1/Box
BDC-16/80-7/10-A	16	48	80	5	507	≥φ2.8	2.3	7	100	1/Box
BDC-18/80-7/10-A	18	54	80	4	405	≥φ2.8	2.3	7	100	1/Box
BDC-20/80-7/10-A	20	60	80	4	405	N/A	2.3	7	100	1/Box
BDC-25/80-7/10-A	25	75	80	2	203	N/A	2.3	7	100	1/Box
BDC-26/80-7/10-A	26	78	80	2	203	N/A	2.3	7	100	1/Box
BDC-30/80-7/10-A	30	90	80	1.5	152	N/A	2.3	7	100	1/Box
BDC-34/80-7/10-A	34	102	80	1.2	122	N/A	2.3	7	100	1/Box
BDC-35/80-7/10-A	35	105	80	1.2	122	N/A	2.3	7	100	1/Box

Wire guided single stage balloons – 80/180

REF	Balloon Inflated O.D.		Balloon Length (mm)	Inflation Pressures		Channel Size (mm)	Catheter Size		Working Length (cm)	Packaging
	(mm)	(Fr)		(atm)	(kPa)		(mm)	(Fr)		
BDC-6/80-7/18-A	6	18	80	8	810	≥φ2.8	2.3	7	180	1/Box
BDC-8/80-7/18-A	8	24	80	8	810	≥φ2.8	2.3	7	180	1/Box
BDC-10/80-7/18-A	10	30	80	8	810	≥φ2.8	2.3	7	180	1/Box
BDC-12/80-7/18-A	12	36	80	6	608	≥φ2.8	2.3	7	180	1/Box
BDC-14/80-7/18-A	14	42	80	5	507	≥φ2.8	2.3	7	180	1/Box
BDC-15/80-7/18-A	15	45	80	5	507	≥φ2.8	2.3	7	180	1/Box
BDC-16/80-7/18-A	16	48	80	5	507	≥φ2.8	2.3	7	180	1/Box
BDC-18/80-7/18-A	18	54	80	4	405	≥φ2.8	2.3	7	180	1/Box
BDC-20/80-7/18-A	20	60	80	4	405	N/A	2.3	7	180	1/Box
BDC-25/80-7/18-A	25	75	80	2	203	N/A	2.3	7	180	1/Box
BDC-26/80-7/18-A	26	78	80	2	203	N/A	2.3	7	180	1/Box
BDC-30/80-7/18-A	30	90	80	1.5	152	N/A	2.3	7	180	1/Box
BDC-34/80-7/18-A	34	102	80	1.2	122	N/A	2.3	7	180	1/Box
BDC-35/80-7/18-A	35	105	80	1.2	122	N/A	2.3	7	180	1/Box

Wire guided single stage balloons – 80/240



REF	Balloon Inflated O.D.		Balloon Length (mm)	Inflation Pressures		Channel Size (mm)	Catheter Size		Working Length (cm)	Packaging
	(mm)	(Fr)		(atm)	(kPa)		(mm)	(Fr)		
BDC-6/80-7/24-A	6	18	80	8	811	≥φ2.8	2.3	7	240	1/Box
BDC-8/80-7/24-A	8	24	80	8	811	≥φ2.8	2.3	7	240	1/Box
BDC-10/80-7/24-A	10	30	80	8	811	≥φ2.8	2.3	7	240	1/Box
BDC-12/80-7/24-A	12	36	80	6	608	≥φ2.8	2.3	7	240	1/Box
BDC-14/80-7/24-A	14	42	80	5	507	≥φ2.8	2.3	7	240	1/Box
BDC-15/80-7/24-A	15	45	80	5	507	≥φ2.8	2.3	7	240	1/Box
BDC-16/80-7/24-A	16	48	80	5	507	≥φ2.8	2.3	7	240	1/Box
BDC-18/80-7/24-A	18	54	80	4	405	≥φ2.8	2.3	7	240	1/Box
BDC-20/80-7/24-A	20	60	80	4	405	N/A	2.3	7	240	1/Box
BDC-25/80-7/24-A	25	75	80	2	203	N/A	2.3	7	240	1/Box
BDC-26/80-7/24-A	26	78	80	2	203	N/A	2.3	7	240	1/Box
BDC-30/80-7/24-A	30	90	80	1.5	152	N/A	2.3	7	240	1/Box
BDC-34/80-7/24-A	34	102	80	1.2	122	N/A	2.3	7	240	1/Box
BDC-35/80-7/24-A	35	105	80	1.2	122	N/A	2.3	7	240	1/Box

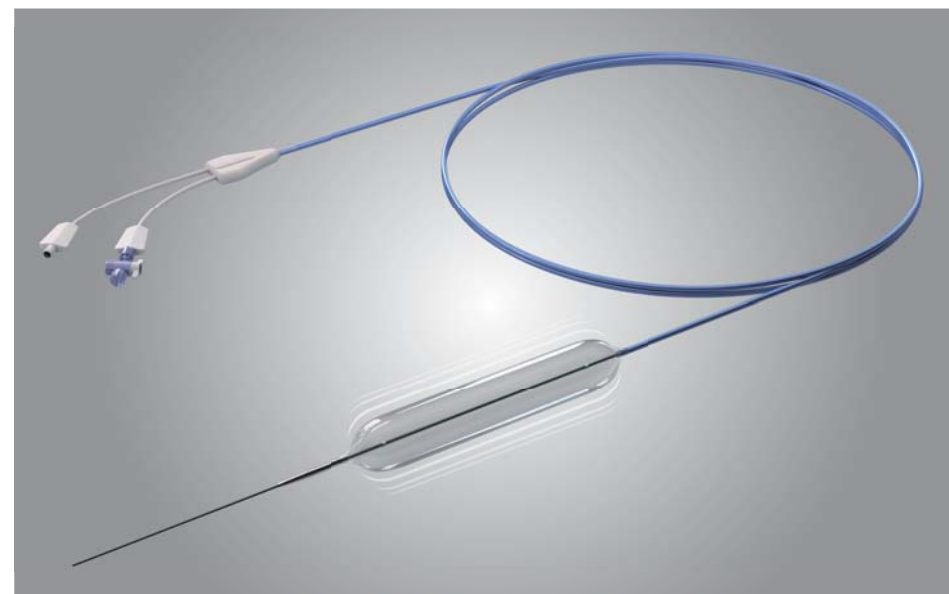
Multi-Stage Dilation Balloons

MICRO-TECH's Disposable Multistage Dilation Balloon Catheter is designed to produce three distinct diameters at three separate pressures during in procedure.

Furthermore, the high-pressure design ensures that the balloon retains its shape over the entire working length, thereby allowing optimum dilation success.

Under different application of pressure, the balloon very rapidly acquires its precisely predefined expansion width.

Excellent workmanship and the use of premium materials, ensure that the MICRO-TECH balloons achieve the highest possible quality standard.



Performance Characteristics:

- three distinct diameters at three separate pressures
- 2 X-ray markings
- separate guide wire and insufflation lumens
- conical shaped catheter tip
- very rapid expansion
- guide-wire compatible up to 0.035 inches

Wire guided multi-stage balloons – 180



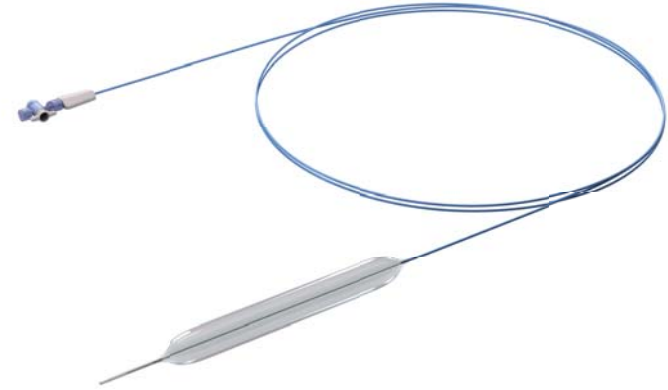
REF	Balloon Inflate O.D.		Balloon Length (mm)	Inflation Pressures		Channel Size (mm)	Catheter Length (cm)	Packaging
	(mm)	(Fr)		(atm)	(kPa)			
MBD-AS-BA-2	6-7-8	18-21-24	30	3-6-10	304-608-1013	≥φ2.8	180	1/Box
MBD-BS-BA-2	8-9-10	24-27-30	30	3-5-9	304-557-912	≥φ2.8	180	1/Box
MBD-CS-BA-2	10-11-12	30-33-36	30	3-5-8	304-507-811	≥φ2.8	180	1/Box
MBD-DS-BA-2	12-13.5-15	36-40.5-45	30	3-4.5-8	304-456-811	≥φ2.8	180	1/Box
MBD-AM-BA-2	6-7-8	18-21-24	55	3-6-10	304-608-1013	≥φ2.8	180	1/Box
MBD-BM-BA-2	8-9-10	24-27-30	55	3-5-9	304-557-912	≥φ2.8	180	1/Box
MBD-CM-BA-2	10-11-12	30-33-36	55	3-5-8	304-507-811	≥φ2.8	180	1/Box
MBD-DM-BA-2	12-13.5-15	36-40.5-45	55	3-4.5-8	304-456-811	≥φ2.8	180	1/Box
MBD-EM-BA-2	15-16.5-18	45-49.5-54	55	3-4.5-7	304-456-709	≥φ2.8	180	1/Box
MBD-FM-BA-2	18-19-20	54-57-60	55	3-4.5-6	304-456-608	≥φ2.8	180	1/Box
MBD-AL-BA-2	6-7-8	18-21-24	80	3-6-10	304-608-1013	≥φ2.8	180	1/Box
MBD-BL-BA-2	8-9-10	24-27-30	80	3-5-9	304-557-912	≥φ2.8	180	1/Box
MBD-CL-BA-2	10-11-12	30-33-36	80	3-5-8	304-507-811	≥φ2.8	180	1/Box
MBD-DL-BA-2	12-13.5-15	36-40.5-45	80	3-4.5-8	304-456-811	≥φ2.8	180	1/Box
MBD-EL-BA-2	15-16.5-18	45-49.5-54	80	3-4.5-7	304-456-709	≥φ2.8	180	1/Box
MBD-FL-BA-2	18-19-20	54-57-60	80	3-4.5-6	304-456-608	≥φ2.8	180	1/Box

Wire guided multi-stage balloons – 230



REF	Balloon Inflate O.D.		Balloon Length (mm)	Inflation Pressures		Channel Size (mm)	Catheter Length (cm)	Packaging
	(mm)	(Fr)		(atm)	(kPa)			
MBD-AS-BB-2	6-7-8	18-21-24	30	3-6-10	304-608-1013	≥φ2.8	230	1/Box
MBD-BS-BB-2	8-9-10	24-27-30	30	3-5-9	304-557-912	≥φ2.8	230	1/Box
MBD-CS-BB-2	10-11-12	30-33-36	30	3-5-8	304-507-811	≥φ2.8	230	1/Box
MBD-DS-BB-2	12-13.5-15	36-40.5-45	30	3-4.5-8	304-456-811	≥φ2.8	230	1/Box
MBD-AM-BB-2	6-7-8	18-21-24	55	3-6-10	304-608-1013	≥φ2.8	230	1/Box
MBD-BM-BB-2	8-9-10	24-27-30	55	3-5-9	304-557-912	≥φ2.8	230	1/Box
MBD-CM-BB-2	10-11-12	30-33-36	55	3-5-8	304-507-811	≥φ2.8	230	1/Box
MBD-DM-BB-2	12-13.5-15	36-40.5-45	55	3-4.5-8	304-456-811	≥φ2.8	230	1/Box
MBD-EM-BB-2	15-16.5-18	45-49.5-54	55	3-4.5-7	304-456-709	≥φ2.8	230	1/Box
MBD-FM-BB-2	18-19-20	54-57-60	55	3-4.5-6	304-456-608	≥φ2.8	230	1/Box

Fixed Wire Esophageal Dilatation Balloons



Fixed wire esophageal multi-stage balloons

REF	Balloon Inflate O.D.		Balloon Length (mm)	Inflation Pressures		Channel Size (mm)	Catheter Size (Fr)	Catheter Length (cm)	Packaging
	(mm)	(Fr)		(atm)	(kPa)				
FWB-06/80-6/18-M	6-7-8	18-21-24	80	3-6-10	304-608-1013	≥2.8	6	180	2/Box
FWB-08/80-6/18-M	8-9-10	24-27-30	80	3-5-9	304-557-912	≥2.8	6	180	2/Box
FWB-10/80-6/18-M	10-11-12	30-33-36	80	3-5-8	304-507-811	≥2.8	6	180	2/Box
FWB-12/80-6/18-M	12-13.5-15	36-40.5-45	80	3-4.5-8	304-456-811	≥2.8	6	180	2/Box
FWB-15/80-6/18-M	15-16.5-18	45-49.5-54	80	3-4.5-7	304-456-709	≥2.8	6	180	2/Box
FWB-18/80-6/18-M	18-19-20	54-57-60	80	3-4.5-6	304-456-608	≥2.8	6	180	2/Box

Fixed wire esophageal single-stage balloons

REF	Balloon Inflate O.D.		Balloon Length (mm)	Inflation Pressures		Channel Size (mm)	Catheter Size (Fr)	Catheter Length (cm)	Packaging
	(mm)	(Fr)		(atm)	(kPa)				
FWB-06/80-6/18-S	6	18	80	4-6-8	405-608-811	≥2.8	6	180	2/Box
FWB-08/80-6/18-S	8	24	80	4-6-8	405-608-811	≥2.8	6	180	2/Box
FWB-10/80-6/18-S	10	30	80	4-6-8	405-608-811	≥2.8	6	180	2/Box
FWB-12/80-6/18-S	12	36	80	3-4.5-6	304-456-608	≥2.8	6	180	2/Box
FWB-15/80-6/18-S	15	45	80	2.5-4.5	253-405-507	≥2.8	6	180	2/Box
FWB-18/80-6/18-S	18	54	80	2-3-4	203-304-405	≥2.8	6	180	2/Box
FWB-20/80-6/18-S	20	60	80	1.5-2.5-3.5	152-253-355	≥2.8	6	180	2/Box

SureClip

The innovative clipping system from MICRO-TECH combines precise positioning with a reliable holding force. This makes the system suitable for effective hemostasis as well as for endoscopic markings. The rotatable clip can be opened and closed multiple times, thus facilitating the exact repositioning of the clip. The clip can be used with any endoscopes equipped with working channels with a minimum diameter of 2.8 mm.

Performance Characteristics:

- Rotatable design for precise placement
- Repeated opening and closing possible
- Excellent holding power
- Wide opening
- Smooth running under tortuous anatomy



Wide range of about 16 mm



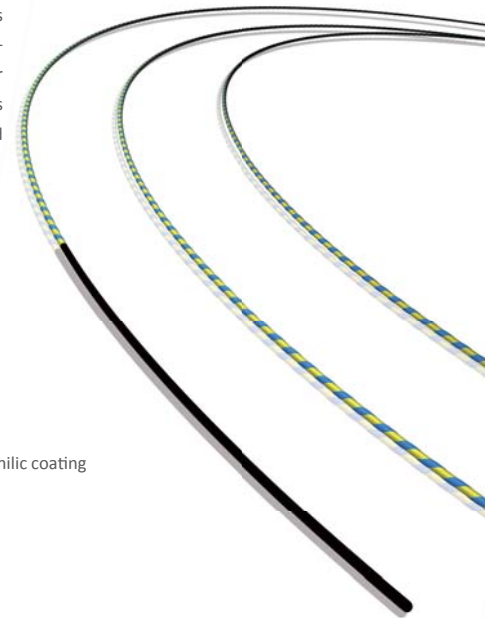
Specifications:

SureClip					
	REF	Clip Opening (mm)	Working Length (cm)	Channel Size (mm)	Packaging
SureClip mini	ROCC-C-26-165-C	8	165	≥φ2.8	10/Box
	ROCC-C-26-195-C	8	195	≥φ2.8	10/Box
	ROCC-C-26-230-C	8	230	≥φ2.8	10/Box
SureClip	ROCC-D-26-165-C	11	165	≥φ2.8	10/Box
	ROCC-D-26-195-C	11	195	≥φ2.8	10/Box
	ROCC-D-26-230-C	11	230	≥φ2.8	10/Box
SureClip plus	ROCC-F-26-165-C	16	165	≥φ2.8	10/Box
	ROCC-F-26-195-C	16	195	≥φ2.8	10/Box
	ROCC-F-26-230-C	16	230	≥φ2.8	10/Box



Guide Wire

The Guide Wires program ideally complements the range of stents and thus facilitates their exact positioning and placement. All guide wires are manufactured out of bending-resistant and torsion-proof Nitinol. Owing to their hydrophilic tips, the wires safely find their way even into areas and stenosis which are hard to reach. This is supported by the wire's high rigidity and controllability.



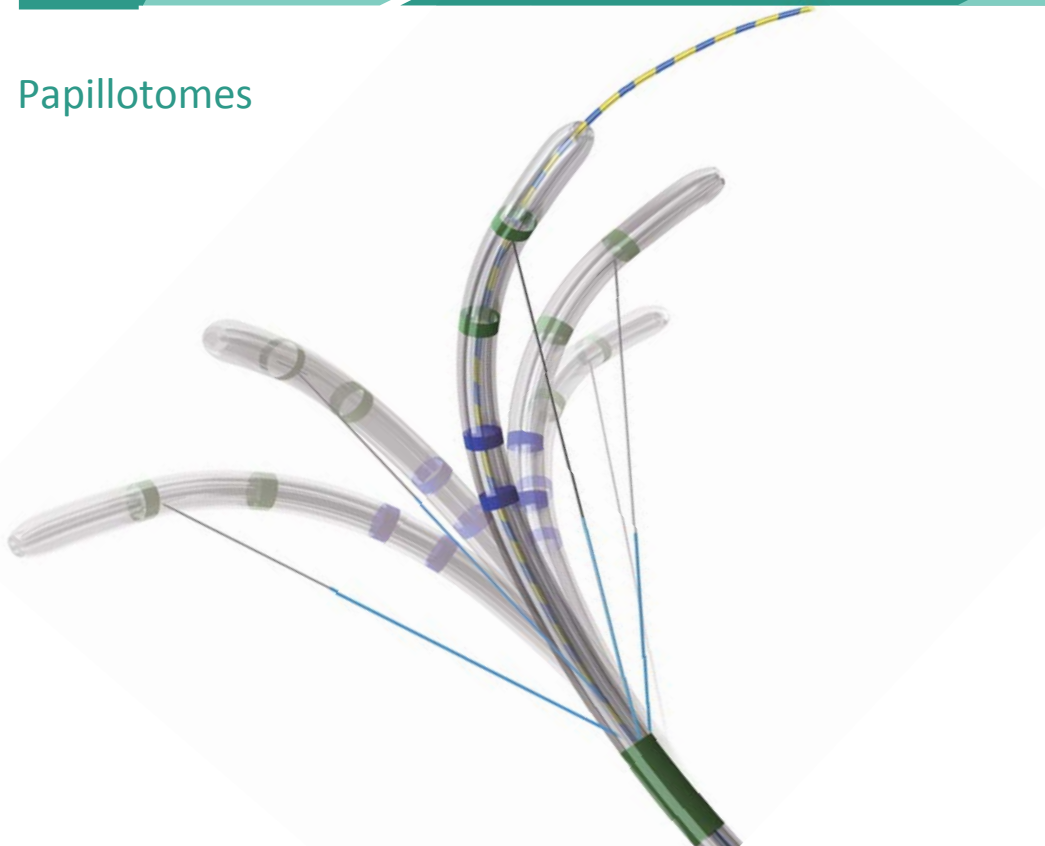
Performance Characteristics:

- The core is made of super elastic alloy to prevent kinking.
- The atraumatic distal tip is made of soft polymeric material with hydrophilic coating to facilitate ease of cannulation.

Specifications:

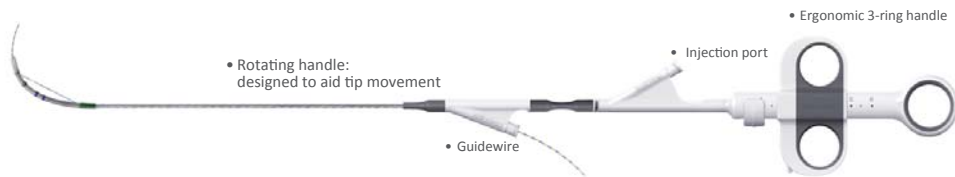
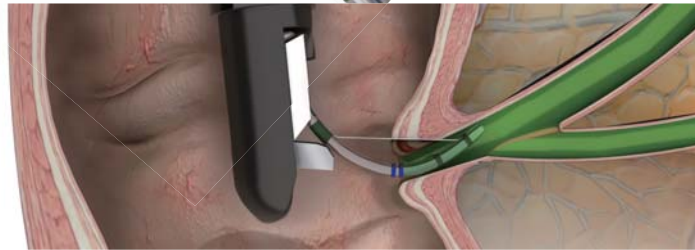
Guidewire					
	REF	Distal Tip O.D. (in)	Working Length (cm)	Tip Style	Packaging
	MTN-BM-89/26-A	.035	260	Straight	2/Box
	MTN-BM-89/26-A-J	.035	260	Angled	2/Box
	MTN-BM-89/45-A	.035	450	Straight	2/Box
	MTN-BM-89/45-A-J	.035	450	Angled	2/Box
	MTN-BM-63/26-A	.025	260	Straight	2/Box
	MTN-BM-63/26-A-J	.025	260	Angled	2/Box
	MTN-BM-63/45-A	.025	450	Straight	2/Box
	MTN-BM-63/45-A-J	.025	450	Angled	2/Box

Papillotomes



Performance Characteristics:

- Tapered tip
- Monofilament cutting wire



Specifications:

Sphincterotome—Standard

REF	Lumen	Tip length (mm)	Cut Wire Length (mm)	Working length (cm)	Recommended Guidewire (in)	Semi-Insulated Cut Wire	Packaging
DSP-30020-111111	3	0	20	200	.035	W/O	2/Box
DSP-30020-111211	3	0	20	200	.035	W/	2/Box
DSP-30025-111111	3	0	25	200	.035	W/O	2/Box
DSP-30025-111211	3	0	25	200	.035	W/	2/Box
DSP-30030-111111	3	0	30	200	.035	W/O	2/Box
DSP-30030-111211	3	0	30	200	.035	W/	2/Box
DSP-30220-111111	3	2	20	200	.035	W/O	2/Box
DSP-30220-111211	3	2	20	200	.035	W/	2/Box
DSP-30225-111111	3	2	25	200	.035	W/O	2/Box
DSP-30225-111211	3	2	25	200	.035	W/	2/Box
DSP-30230-111111	3	2	30	200	.035	W/O	2/Box
DSP-30230-111211	3	2	30	200	.035	W/	2/Box
DSP-30520-111111	3	5	20	200	.035	W/O	2/Box
DSP-30520-111211	3	5	20	200	.035	W/	2/Box
DSP-30525-111111	3	5	25	200	.035	W/O	2/Box
DSP-30525-111211	3	5	25	200	.035	W/	2/Box
DSP-30530-111111	3	5	30	200	.035	W/O	2/Box
DSP-30530-111211	3	5	30	200	.035	W/	2/Box

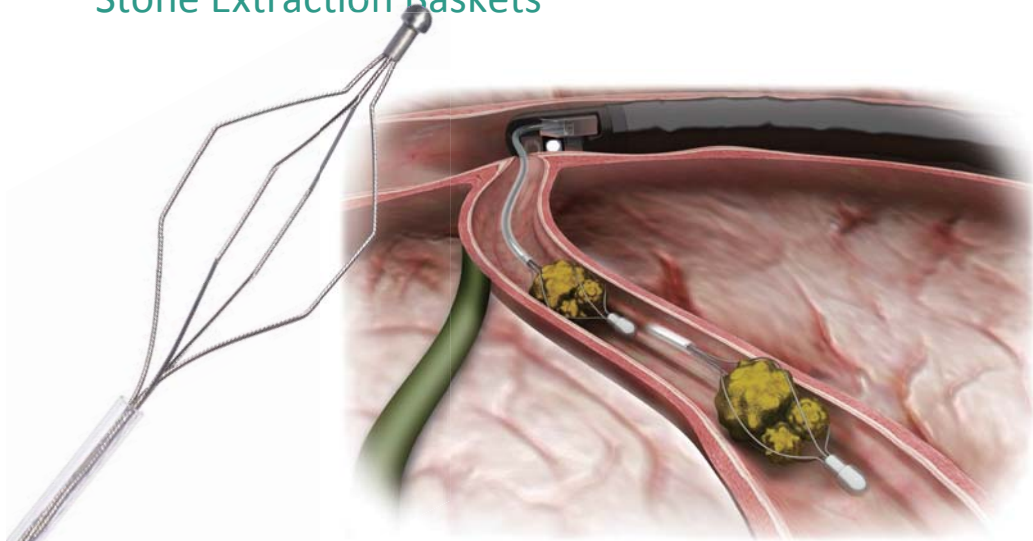
Sphincterotome—Standard, Preloaded with Guidewire

REF	lumen	Tip length (mm)	Cut Wire Length (mm)	Working length (cm)	Preloaded Guidewire (in)	Semi-Insulated Cut Wire	Packaging
DSP-30020-111121	3	0	20	200	.035	W/O	2/Box
DSP-30020-111221	3	0	20	200	.035	W/	2/Box
DSP-30025-111121	3	0	25	200	.035	W/O	2/Box
DSP-30025-111221	3	0	25	200	.035	W/	2/Box
DSP-30030-111121	3	0	30	200	.035	W/O	2/Box
DSP-30030-111221	3	0	30	200	.035	W/	2/Box
DSP-30220-111121	3	2	20	200	.035	W/O	2/Box
DSP-30220-111221	3	2	20	200	.035	W/	2/Box
DSP-30225-111121	3	2	25	200	.035	W/O	2/Box
DSP-30225-111221	3	2	25	200	.035	W/	2/Box
DSP-30230-111121	3	2	30	200	.035	W/O	2/Box
DSP-30230-111221	3	2	30	200	.035	W/	2/Box
DSP-30520-111121	3	5	20	200	.035	W/O	2/Box
DSP-30520-111221	3	5	20	200	.035	W/	2/Box
DSP-30525-111121	3	5	25	200	.035	W/O	2/Box
DSP-30525-111221	3	5	25	200	.035	W/	2/Box
DSP-30530-111121	3	5	30	200	.035	W/O	2/Box
DSP-30530-111221	3	5	30	200	.035	W/	2/Box

Sphincterotome—Needle Knife

REF	lumen	Tip length (mm)	Cut Wire Length (mm)	Working length (cm)	Recommended Guidewire (in)	Packaging
DSP-30505-121111	3	5	5	200	0.035	2/Box
DSP-30505-121211	3	5	5	200	0.035	2/Box
DSP-30507-121111	3	5	7	200	0.035	2/Box
DSP-30507-121211	3	5	7	200	0.035	2/Box

Stone Extraction Baskets



This product is used for endoscopic capture and extraction of biliary calculi.

Performance Characteristics:

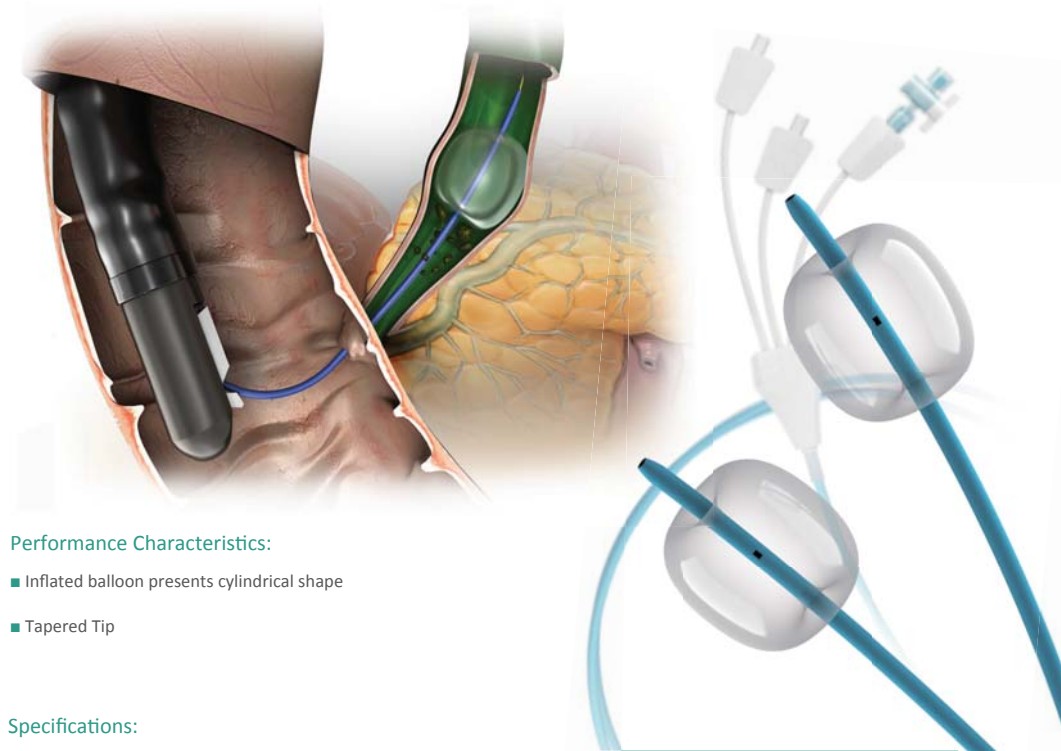
- Specially designed wire to ensure good shape retention.
- Autorotation during basket withdrawal allows for easier capture and better stone retention.

Specifications:

Stone extraction baskets

REF	Basket Type	Basket Diameter (mm)	Basket Length (mm)	Catheter O.D. (Fr)	Working Length (cm)	Channel Size (mm)	Packaging
SEB111/1570200-P	Hexagonal	15	40	7	200	≥φ2.8	2/Box
SEB111/2070200-P	Hexagonal	20	45	7	200	≥φ2.8	2/Box
SEB111/2570200-P	Hexagonal	25	50	7	200	≥φ2.8	2/Box
SEB111/3070200-P	Hexagonal	30	55	7	200	≥φ2.8	2/Box
SEB111/3570200-P	Hexagonal	35	60	7	200	≥φ2.8	2/Box
SEB131/2570200-P	Semi-spiral	25	50	7	200	≥φ2.8	2/Box
SEB131/3070200-P	Semi-spiral	30	55	7	200	≥φ2.8	2/Box
SEB131/3570200-P	Semi-spiral	35	60	7	200	≥φ2.8	2/Box

Stone Extraction Balloons



Performance Characteristics:

- Inflated balloon presents cylindrical shape
- Tapered Tip

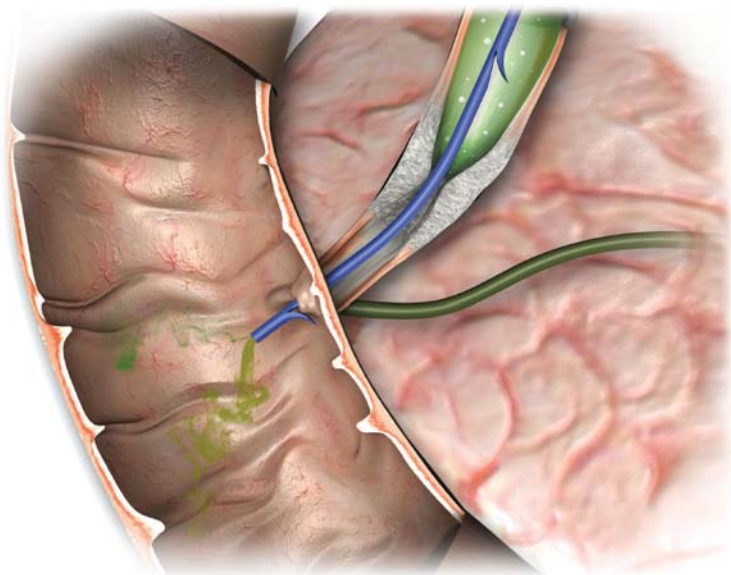
Specifications:

Stone extraction balloons

REF	Balloon Inflated O.D. (mm)	Working Length (cm)	Recommended Guidewire (in)	Channel Size (mm)	Injection	Packaging
SRB-T-9/12/15-20	9-12-15	200	.035	≥φ2.8	Above	1/Box
SRB-T-12/15/18-20	12-15-18	200	.035	≥φ3.2	Above	1/Box
SRB-T-15/18/21-20	15-18-21	200	.035	≥φ3.2	Above	1/Box
SRB-T-9/12/15-20-B	9-12-15	200	.035	≥φ2.8	Below	1/Box
SRB-T-12/15/18-20-B	12-15-18	200	.035	≥φ3.2	Below	1/Box
SRB-T-15/18/21-20-B	15-18-21	200	.035	≥φ3.2	Below	1/Box

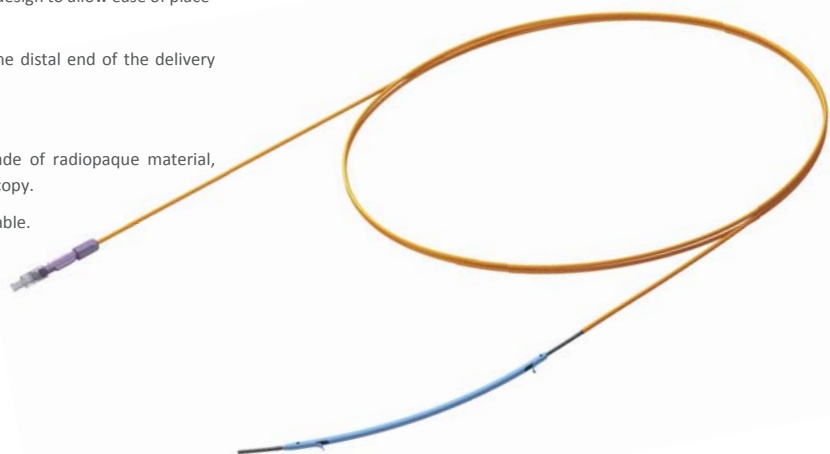
Plastic Biliary Stents

This product is indicated for biliary drainage.



Performance Characteristics:

- Simple delivery catheter design to allow ease of placement.
- Radiopaque marker at the distal end of the delivery catheter to enable accurate positioning.
- Drainage catheter is made of radiopaque material, easily visible under fluoroscopy.
- Wide range of sizes available.



Specifications:

Plastic biliary stents with delivery system



REF	Stent Shape	Stent Diameter (Fr)	Stent Working Length (cm)	Recommended Guidewire (in)	Packaging
BPDS-32114-0707/22	Amsterdam Type	7	7	.035	1/Box
BPDS-32114-0708/22	Amsterdam Type	7	8	.035	1/Box
BPDS-32114-0709/22	Amsterdam Type	7	9	.035	1/Box
BPDS-32114-0710/22	Amsterdam Type	7	10	.035	1/Box
BPDS-32114-0711/22	Amsterdam Type	7	11	.035	1/Box
BPDS-32114-0712/22	Amsterdam Type	7	12	.035	1/Box
BPDS-32114-0713/22	Amsterdam Type	7	13	.035	1/Box
BPDS-32114-0714/22	Amsterdam Type	7	14	.035	1/Box
BPDS-32114-0715/22	Amsterdam Type	7	15	.035	1/Box
BPDS-32114-0807/22	Amsterdam Type	8.5	7	.035	1/Box
BPDS-32114-0808/22	Amsterdam Type	8.5	8	.035	1/Box
BPDS-32114-0809/22	Amsterdam Type	8.5	9	.035	1/Box
BPDS-32114-0810/22	Amsterdam Type	8.5	10	.035	1/Box
BPDS-32114-0811/22	Amsterdam Type	8.5	11	.035	1/Box
BPDS-32114-0812/22	Amsterdam Type	8.5	12	.035	1/Box
BPDS-32114-0813/22	Amsterdam Type	8.5	13	.035	1/Box
BPDS-32114-0814/22	Amsterdam Type	8.5	14	.035	1/Box
BPDS-32114-0815/22	Amsterdam Type	8.5	15	.035	1/Box
BPDS-32114-1007/22	Amsterdam Type	10	7	.035	1/Box
BPDS-32114-1008/22	Amsterdam Type	10	8	.035	1/Box
BPDS-32114-1009/22	Amsterdam Type	10	9	.035	1/Box
BPDS-32114-1010/22	Amsterdam Type	10	10	.035	1/Box
BPDS-32114-1011/22	Amsterdam Type	10	11	.035	1/Box
BPDS-32114-1012/22	Amsterdam Type	10	12	.035	1/Box
BPDS-32114-1013/22	Amsterdam Type	10	13	.035	1/Box
BPDS-32114-1014/22	Amsterdam Type	10	14	.035	1/Box
BPDS-32114-1015/22	Amsterdam Type	10	15	.035	1/Box

Plastic biliary stents with delivery system



REF	Stent Shape	Stent Diameter (Fr)	Stent Working Length (cm)	Recommended Guidewire (in)	Packaging
BPDS-33114-0707/22	Duodenal Bend	7	7	.035	1/Box
BPDS-33114-0708/22	Duodenal Bend	7	8	.035	1/Box
BPDS-33114-0709/22	Duodenal Bend	7	9	.035	1/Box
BPDS-33114-0710/22	Duodenal Bend	7	10	.035	1/Box
BPDS-33114-0711/22	Duodenal Bend	7	11	.035	1/Box
BPDS-33114-0712/22	Duodenal Bend	7	12	.035	1/Box
BPDS-33114-0713/22	Duodenal Bend	7	13	.035	1/Box
BPDS-33114-0714/22	Duodenal Bend	7	14	.035	1/Box
BPDS-33114-0715/22	Duodenal Bend	7	15	.035	1/Box
BPDS-33114-0807/22	Duodenal Bend	8.5	7	.035	1/Box
BPDS-33114-0808/22	Duodenal Bend	8.5	8	.035	1/Box
BPDS-33114-0809/22	Duodenal Bend	8.5	9	.035	1/Box
BPDS-33114-0810/22	Duodenal Bend	8.5	10	.035	1/Box
BPDS-33114-0811/22	Duodenal Bend	8.5	11	.035	1/Box
BPDS-33114-0812/22	Duodenal Bend	8.5	12	.035	1/Box
BPDS-33114-0813/22	Duodenal Bend	8.5	13	.035	1/Box
BPDS-33114-0814/22	Duodenal Bend	8.5	14	.035	1/Box
BPDS-33114-0815/22	Duodenal Bend	8.5	15	.035	1/Box
BPDS-33114-1007/22	Duodenal Bend	10	7	.035	1/Box
BPDS-33114-1008/22	Duodenal Bend	10	8	.035	1/Box
BPDS-33114-1009/22	Duodenal Bend	10	9	.035	1/Box
BPDS-33114-1010/22	Duodenal Bend	10	10	.035	1/Box
BPDS-33114-1011/22	Duodenal Bend	10	11	.035	1/Box
BPDS-33114-1012/22	Duodenal Bend	10	12	.035	1/Box
BPDS-33114-1013/22	Duodenal Bend	10	13	.035	1/Box
BPDS-33114-1014/22	Duodenal Bend	10	14	.035	1/Box
BPDS-33114-1015/22	Duodenal Bend	10	15	.035	1/Box

Plastic biliary stents with delivery system



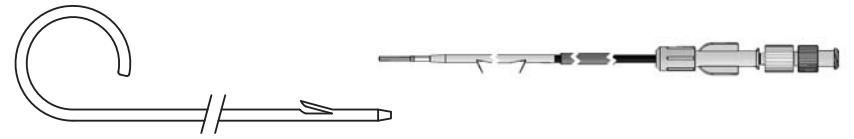
REF	Stent Shape	Stent Diameter (Fr)	Stent Working Length (cm)	Recommended Guidewire (in)	Packaging
BPDS-31114-0707/22	Straight	7	7	.035	1/Box
BPDS-31114-0708/22	Straight	7	8	.035	1/Box
BPDS-31114-0709/22	Straight	7	9	.035	1/Box
BPDS-31114-0710/22	Straight	7	10	.035	1/Box
BPDS-31114-0711/22	Straight	7	11	.035	1/Box
BPDS-31114-0712/22	Straight	7	12	.035	1/Box
BPDS-31114-0713/22	Straight	7	13	.035	1/Box
BPDS-31114-0714/22	Straight	7	14	.035	1/Box
BPDS-31114-0715/22	Straight	7	15	.035	1/Box
BPDS-31114-0807/22	Straight	8.5	7	.035	1/Box
BPDS-31114-0808/22	Straight	8.5	8	.035	1/Box
BPDS-31114-0809/22	Straight	8.5	9	.035	1/Box
BPDS-31114-0810/22	Straight	8.5	10	.035	1/Box
BPDS-31114-0811/22	Straight	8.5	11	.035	1/Box
BPDS-31114-0812/22	Straight	8.5	12	.035	1/Box
BPDS-31114-0813/22	Straight	8.5	13	.035	1/Box
BPDS-31114-0814/22	Straight	8.5	14	.035	1/Box
BPDS-31114-0815/22	Straight	8.5	15	.035	1/Box
BPDS-31114-1007/22	Straight	10	7	.035	1/Box
BPDS-31114-1008/22	Straight	10	8	.035	1/Box
BPDS-31114-1009/22	Straight	10	9	.035	1/Box
BPDS-31114-1010/22	Straight	10	10	.035	1/Box
BPDS-31114-1011/22	Straight	10	11	.035	1/Box
BPDS-31114-1012/22	Straight	10	12	.035	1/Box
BPDS-31114-1013/22	Straight	10	13	.035	1/Box
BPDS-31114-1014/22	Straight	10	14	.035	1/Box
BPDS-31114-1015/22	Straight	10	15	.035	1/Box

Plastic biliary stents with delivery system



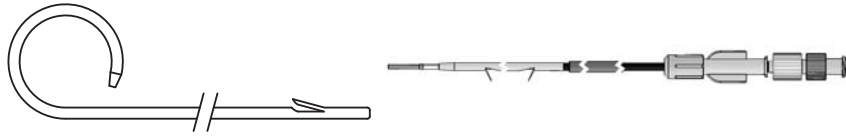
REF	Stent Shape	Stent Diameter (Fr)	Stent Working Length (cm)	Recommended Guidewire (in)	Packaging
BPDS-34114-0707/22	Center Bend	7	7	.035	1/Box
BPDS-34114-0708/22	Center Bend	7	8	.035	1/Box
BPDS-34114-0709/22	Center Bend	7	9	.035	1/Box
BPDS-34114-0710/22	Center Bend	7	10	.035	1/Box
BPDS-34114-0711/22	Center Bend	7	11	.035	1/Box
BPDS-34114-0712/22	Center Bend	7	12	.035	1/Box
BPDS-34114-0713/22	Center Bend	7	13	.035	1/Box
BPDS-34114-0714/22	Center Bend	7	14	.035	1/Box
BPDS-34114-0715/22	Center Bend	7	15	.035	1/Box
BPDS-34114-0807/22	Center Bend	8.5	7	.035	1/Box
BPDS-34114-0808/22	Center Bend	8.5	8	.035	1/Box
BPDS-34114-0809/22	Center Bend	8.5	9	.035	1/Box
BPDS-34114-0810/22	Center Bend	8.5	10	.035	1/Box
BPDS-34114-0811/22	Center Bend	8.5	11	.035	1/Box
BPDS-34114-0812/22	Center Bend	8.5	12	.035	1/Box
BPDS-34114-0813/22	Center Bend	8.5	13	.035	1/Box
BPDS-34114-0814/22	Center Bend	8.5	14	.035	1/Box
BPDS-34114-0815/22	Center Bend	8.5	15	.035	1/Box
BPDS-34114-1007/22	Center Bend	10	7	.035	1/Box
BPDS-34114-1008/22	Center Bend	10	8	.035	1/Box
BPDS-34114-1009/22	Center Bend	10	9	.035	1/Box
BPDS-34114-1010/22	Center Bend	10	10	.035	1/Box
BPDS-34114-1011/22	Center Bend	10	11	.035	1/Box
BPDS-34114-1012/22	Center Bend	10	12	.035	1/Box
BPDS-34114-1013/22	Center Bend	10	13	.035	1/Box
BPDS-34114-1014/22	Center Bend	10	14	.035	1/Box
BPDS-34114-1015/22	Center Bend	10	15	.035	1/Box

Plastic biliary stents with delivery system



REF	Stent Shape	Stent Diameter (Fr)	Stent Working Length (cm)	Recommended Guidewire (in)	Packaging
BPDS-31916-0705/22	Proximal Pigtail	7	5	.035	1/Box
BPDS-31916-0706/22	Proximal Pigtail	7	6	.035	1/Box
BPDS-31916-0707/22	Proximal Pigtail	7	7	.035	1/Box
BPDS-31916-0708/22	Proximal Pigtail	7	8	.035	1/Box
BPDS-31916-0709/22	Proximal Pigtail	7	9	.035	1/Box
BPDS-31916-0710/22	Proximal Pigtail	7	10	.035	1/Box
BPDS-31916-0711/22	Proximal Pigtail	7	11	.035	1/Box
BPDS-31916-0712/22	Proximal Pigtail	7	12	.035	1/Box

Plastic biliary stents with delivery system



REF	Stent Shape	Stent Diameter (Fr)	Stent Working Length (cm)	Recommended Guidewire (in)	Packaging
BPDS-31196-0705/22	Distal Pigtail	7	5	.035	1/Box
BPDS-31196-0706/22	Distal Pigtail	7	6	.035	1/Box
BPDS-31196-0707/22	Distal Pigtail	7	7	.035	1/Box
BPDS-31196-0708/22	Distal Pigtail	7	8	.035	1/Box
BPDS-31196-0709/22	Distal Pigtail	7	9	.035	1/Box
BPDS-31196-0710/22	Distal Pigtail	7	10	.035	1/Box
BPDS-31196-0711/22	Distal Pigtail	7	11	.035	1/Box
BPDS-31196-0712/22	Distal Pigtail	7	12	.035	1/Box
BPDS-31196-0805/22	Distal Pigtail	8.5	5	.035	1/Box
BPDS-31196-0806/22	Distal Pigtail	8.5	6	.035	1/Box
BPDS-31196-0807/22	Distal Pigtail	8.5	7	.035	1/Box
BPDS-31196-0808/22	Distal Pigtail	8.5	8	.035	1/Box
BPDS-31196-0809/22	Distal Pigtail	8.5	9	.035	1/Box
BPDS-31196-0810/22	Distal Pigtail	8.5	10	.035	1/Box
BPDS-31196-0811/22	Distal Pigtail	8.5	11	.035	1/Box
BPDS-31196-0812/22	Distal Pigtail	8.5	12	.035	1/Box
BPDS-31196-1005/22	Distal Pigtail	10	5	.035	1/Box
BPDS-31196-1006/22	Distal Pigtail	10	6	.035	1/Box
BPDS-31196-1007/22	Distal Pigtail	10	7	.035	1/Box
BPDS-31196-1008/22	Distal Pigtail	10	8	.035	1/Box
BPDS-31196-1009/22	Distal Pigtail	10	9	.035	1/Box
BPDS-31196-1010/22	Distal Pigtail	10	10	.035	1/Box
BPDS-31196-1011/22	Distal Pigtail	10	11	.035	1/Box
BPDS-31196-1012/22	Distal Pigtail	10	12	.035	1/Box

Plastic biliary stents with delivery system



REF	Stent Shape	Stent Diameter (Fr)	Stent Working Length (cm)	Recommended Guidewire (in)	Packaging
BPDS-13442-0807/22	Tannenbaum	8.5	7	.035	1/Box
BPDS-13442-0808/22	Tannenbaum	8.5	8	.035	1/Box
BPDS-13442-0809/22	Tannenbaum	8.5	9	.035	1/Box
BPDS-13442-0810/22	Tannenbaum	8.5	10	.035	1/Box
BPDS-13442-0811/22	Tannenbaum	8.5	11	.035	1/Box
BPDS-13442-0812/22	Tannenbaum	8.5	12	.035	1/Box
BPDS-13442-0813/22	Tannenbaum	8.5	13	.035	1/Box
BPDS-13442-0814/22	Tannenbaum	8.5	14	.035	1/Box
BPDS-13442-0815/22	Tannenbaum	8.5	15	.035	1/Box
BPDS-13442-1007/22	Tannenbaum	10	7	.035	1/Box
BPDS-13442-1008/22	Tannenbaum	10	8	.035	1/Box
BPDS-13442-1009/22	Tannenbaum	10	9	.035	1/Box
BPDS-13442-1010/22	Tannenbaum	10	10	.035	1/Box
BPDS-13442-1011/22	Tannenbaum	10	11	.035	1/Box
BPDS-13442-1012/22	Tannenbaum	10	12	.035	1/Box
BPDS-13442-1013/22	Tannenbaum	10	13	.035	1/Box
BPDS-13442-1014/22	Tannenbaum	10	14	.035	1/Box
BPDS-13442-1015/22	Tannenbaum	10	15	.035	1/Box

Plastic biliary stents with delivery system



REF	Stent Shape	Stent Diameter (Fr)	Stent Working Length (cm)	Recommended Guidewire (in)	Packaging
BPDS-31993-0705/22	Double Pigtail	7	5	.035	1/Box
BPDS-31993-0706/22	Double Pigtail	7	6	.035	1/Box
BPDS-31993-0707/22	Double Pigtail	7	7	.035	1/Box
BPDS-31993-0708/22	Double Pigtail	7	8	.035	1/Box
BPDS-31993-0709/22	Double Pigtail	7	9	.035	1/Box
BPDS-31993-0710/22	Double Pigtail	7	10	.035	1/Box
BPDS-31993-0711/22	Double Pigtail	7	11	.035	1/Box
BPDS-31993-0712/22	Double Pigtail	7	12	.035	1/Box
BPDS-31993-0805/22	Double Pigtail	8.5	5	.035	1/Box
BPDS-31993-0806/22	Double Pigtail	8.5	6	.035	1/Box
BPDS-31993-0807/22	Double Pigtail	8.5	7	.035	1/Box
BPDS-31993-0808/22	Double Pigtail	8.5	8	.035	1/Box
BPDS-31993-0809/22	Double Pigtail	8.5	9	.035	1/Box
BPDS-31993-0810/22	Double Pigtail	8.5	10	.035	1/Box
BPDS-31993-0811/22	Double Pigtail	8.5	11	.035	1/Box
BPDS-31993-0812/22	Double Pigtail	8.5	12	.035	1/Box
BPDS-31993-1005/22	Double Pigtail	10	5	.035	1/Box
BPDS-31993-1006/22	Double Pigtail	10	6	.035	1/Box
BPDS-31993-1007/22	Double Pigtail	10	7	.035	1/Box
BPDS-31993-1008/22	Double Pigtail	10	8	.035	1/Box
BPDS-31993-1009/22	Double Pigtail	10	9	.035	1/Box
BPDS-31993-1010/22	Double Pigtail	10	10	.035	1/Box
BPDS-31993-1011/22	Double Pigtail	10	11	.035	1/Box
BPDS-31993-1012/22	Double Pigtail	10	12	.035	1/Box

Plastic biliary stents-Single stent



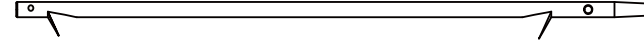
REF	Stent Shape	Stent Diameter (Fr)	Stent Working Length (cm)	Packaging
BPDS-32114-0707	Amsterdam Type	7	7	10/Box
BPDS-32114-0708	Amsterdam Type	7	8	10/Box
BPDS-32114-0709	Amsterdam Type	7	9	10/Box
BPDS-32114-0710	Amsterdam Type	7	10	10/Box
BPDS-32114-0711	Amsterdam Type	7	11	10/Box
BPDS-32114-0712	Amsterdam Type	7	12	10/Box
BPDS-32114-0713	Amsterdam Type	7	13	10/Box
BPDS-32114-0714	Amsterdam Type	7	14	10/Box
BPDS-32114-0715	Amsterdam Type	7	15	10/Box
BPDS-32114-0807	Amsterdam Type	8.5	7	10/Box
BPDS-32114-0808	Amsterdam Type	8.5	8	10/Box
BPDS-32114-0809	Amsterdam Type	8.5	9	10/Box
BPDS-32114-0810	Amsterdam Type	8.5	10	10/Box
BPDS-32114-0811	Amsterdam Type	8.5	11	10/Box
BPDS-32114-0812	Amsterdam Type	8.5	12	10/Box
BPDS-32114-0813	Amsterdam Type	8.5	13	10/Box
BPDS-32114-0814	Amsterdam Type	8.5	14	10/Box
BPDS-32114-0815	Amsterdam Type	8.5	15	10/Box
BPDS-32114-1007	Amsterdam Type	10	7	10/Box
BPDS-32114-1008	Amsterdam Type	10	8	10/Box
BPDS-32114-1009	Amsterdam Type	10	9	10/Box
BPDS-32114-1010	Amsterdam Type	10	10	10/Box
BPDS-32114-1011	Amsterdam Type	10	11	10/Box
BPDS-32114-1012	Amsterdam Type	10	12	10/Box
BPDS-32114-1013	Amsterdam Type	10	13	10/Box
BPDS-32114-1014	Amsterdam Type	10	14	10/Box
BPDS-32114-1015	Amsterdam Type	10	15	10/Box

Plastic biliary stents-Single stent



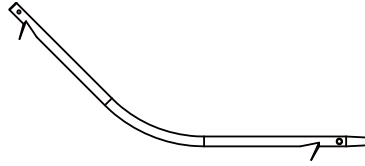
REF	Stent Shape	Stent Diameter (Fr)	Stent Working Length (cm)	Packaging
BPDS-33114-0707	Duodenal Bend	7	7	10/Box
BPDS-33114-0708	Duodenal Bend	7	8	10/Box
BPDS-33114-0709	Duodenal Bend	7	9	10/Box
BPDS-33114-0710	Duodenal Bend	7	10	10/Box
BPDS-33114-0711	Duodenal Bend	7	11	10/Box
BPDS-33114-0712	Duodenal Bend	7	12	10/Box
BPDS-33114-0713	Duodenal Bend	7	13	10/Box
BPDS-33114-0714	Duodenal Bend	7	14	10/Box
BPDS-33114-0715	Duodenal Bend	7	15	10/Box
BPDS-33114-0807	Duodenal Bend	8.5	7	10/Box
BPDS-33114-0808	Duodenal Bend	8.5	8	10/Box
BPDS-33114-0809	Duodenal Bend	8.5	9	10/Box
BPDS-33114-0810	Duodenal Bend	8.5	10	10/Box
BPDS-33114-0811	Duodenal Bend	8.5	11	10/Box
BPDS-33114-0812	Duodenal Bend	8.5	12	10/Box
BPDS-33114-0813	Duodenal Bend	8.5	13	10/Box
BPDS-33114-0814	Duodenal Bend	8.5	14	10/Box
BPDS-33114-0815	Duodenal Bend	8.5	15	10/Box
BPDS-33114-1007	Duodenal Bend	10	7	10/Box
BPDS-33114-1008	Duodenal Bend	10	8	10/Box
BPDS-33114-1009	Duodenal Bend	10	9	10/Box
BPDS-33114-1010	Duodenal Bend	10	10	10/Box
BPDS-33114-1011	Duodenal Bend	10	11	10/Box
BPDS-33114-1012	Duodenal Bend	10	12	10/Box
BPDS-33114-1013	Duodenal Bend	10	13	10/Box
BPDS-33114-1014	Duodenal Bend	10	14	10/Box
BPDS-33114-1015	Duodenal Bend	10	15	10/Box

Plastic biliary stents-Single stent



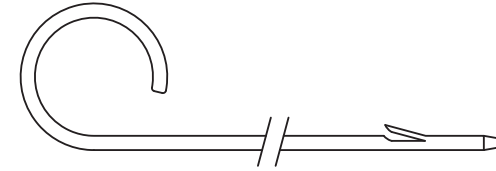
REF	Stent Shape	Stent Diameter (Fr)	Stent Working Length (cm)	Packaging
BPDS-31114-0707	Straight	7	7	10/Box
BPDS-31114-0708	Straight	7	8	10/Box
BPDS-31114-0709	Straight	7	9	10/Box
BPDS-31114-0710	Straight	7	10	10/Box
BPDS-31114-0711	Straight	7	11	10/Box
BPDS-31114-0712	Straight	7	12	10/Box
BPDS-31114-0713	Straight	7	13	10/Box
BPDS-31114-0714	Straight	7	14	10/Box
BPDS-31114-0715	Straight	7	15	10/Box
BPDS-31114-0807	Straight	8.5	7	10/Box
BPDS-31114-0808	Straight	8.5	8	10/Box
BPDS-31114-0809	Straight	8.5	9	10/Box
BPDS-31114-0810	Straight	8.5	10	10/Box
BPDS-31114-0811	Straight	8.5	11	10/Box
BPDS-31114-0812	Straight	8.5	12	10/Box
BPDS-31114-0813	Straight	8.5	13	10/Box
BPDS-31114-0814	Straight	8.5	14	10/Box
BPDS-31114-0815	Straight	8.5	15	10/Box
BPDS-31114-1007	Straight	10	7	10/Box
BPDS-31114-1008	Straight	10	8	10/Box
BPDS-31114-1009	Straight	10	9	10/Box
BPDS-31114-1010	Straight	10	10	10/Box
BPDS-31114-1011	Straight	10	11	10/Box
BPDS-31114-1012	Straight	10	12	10/Box
BPDS-31114-1013	Straight	10	13	10/Box
BPDS-31114-1014	Straight	10	14	10/Box
BPDS-31114-1015	Straight	10	15	10/Box

Plastic biliary stents-Single stent



REF	Stent Shape	Stent Diameter (Fr)	Stent Working Length (cm)	Packaging
BPDS-34114-0707	Center Bend	7	7	10/Box
BPDS-34114-0708	Center Bend	7	8	10/Box
BPDS-34114-0709	Center Bend	7	9	10/Box
BPDS-34114-0710	Center Bend	7	10	10/Box
BPDS-34114-0711	Center Bend	7	11	10/Box
BPDS-34114-0712	Center Bend	7	12	10/Box
BPDS-34114-0713	Center Bend	7	13	10/Box
BPDS-34114-0714	Center Bend	7	14	10/Box
BPDS-34114-0715	Center Bend	7	15	10/Box
BPDS-34114-0807	Center Bend	8.5	7	10/Box
BPDS-34114-0808	Center Bend	8.5	8	10/Box
BPDS-34114-0809	Center Bend	8.5	9	10/Box
BPDS-34114-0810	Center Bend	8.5	10	10/Box
BPDS-34114-0811	Center Bend	8.5	11	10/Box
BPDS-34114-0812	Center Bend	8.5	12	10/Box
BPDS-34114-0813	Center Bend	8.5	13	10/Box
BPDS-34114-0814	Center Bend	8.5	14	10/Box
BPDS-34114-0815	Center Bend	8.5	15	10/Box
BPDS-34114-1007	Center Bend	10	7	10/Box
BPDS-34114-1008	Center Bend	10	8	10/Box
BPDS-34114-1009	Center Bend	10	9	10/Box
BPDS-34114-1010	Center Bend	10	10	10/Box
BPDS-34114-1011	Center Bend	10	11	10/Box
BPDS-34114-1012	Center Bend	10	12	10/Box
BPDS-34114-1013	Center Bend	10	13	10/Box
BPDS-34114-1014	Center Bend	10	14	10/Box
BPDS-34114-1015	Center Bend	10	15	10/Box

Plastic biliary stents-Single stent



REF	Stent Shape	Stent Diameter (Fr)	Stent Working Length (cm)	Packaging
BPDS-31916-0505	Proximal Pigtail	5	5	10/Box
BPDS-31916-0506	Proximal Pigtail	5	6	10/Box
BPDS-31916-0507	Proximal Pigtail	5	7	10/Box
BPDS-31916-0508	Proximal Pigtail	5	8	10/Box
BPDS-31916-0509	Proximal Pigtail	5	9	10/Box
BPDS-31916-0510	Proximal Pigtail	5	10	10/Box
BPDS-31916-0511	Proximal Pigtail	5	11	10/Box
BPDS-31916-0512	Proximal Pigtail	5	12	10/Box
BPDS-31916-0705	Proximal Pigtail	7	5	10/Box
BPDS-31916-0706	Proximal Pigtail	7	6	10/Box
BPDS-31916-0707	Proximal Pigtail	7	7	10/Box
BPDS-31916-0708	Proximal Pigtail	7	8	10/Box
BPDS-31916-0709	Proximal Pigtail	7	9	10/Box
BPDS-31916-0710	Proximal Pigtail	7	10	10/Box
BPDS-31916-0711	Proximal Pigtail	7	11	10/Box
BPDS-31916-0712	Proximal Pigtail	7	12	10/Box

Plastic biliary stents-Single stent



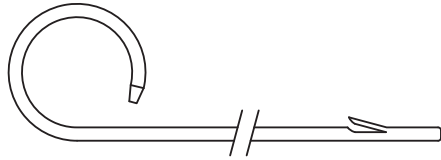
REF	Stent Shape	Stent Diameter (Fr)	Stent Working Length (cm)	Packaging
BPDS-13442-0807	Tannenbaum	8.5	7	10/Box
BPDS-13442-0808	Tannenbaum	8.5	8	10/Box
BPDS-13442-0809	Tannenbaum	8.5	9	10/Box
BPDS-13442-0810	Tannenbaum	8.5	10	10/Box
BPDS-13442-0811	Tannenbaum	8.5	11	10/Box
BPDS-13442-0812	Tannenbaum	8.5	12	10/Box
BPDS-13442-0813	Tannenbaum	8.5	13	10/Box
BPDS-13442-0814	Tannenbaum	8.5	14	10/Box
BPDS-13442-0815	Tannenbaum	8.5	15	10/Box
BPDS-13442-1007	Tannenbaum	10	7	10/Box
BPDS-13442-1008	Tannenbaum	10	8	10/Box
BPDS-13442-1009	Tannenbaum	10	9	10/Box
BPDS-13442-1010	Tannenbaum	10	10	10/Box
BPDS-13442-1011	Tannenbaum	10	11	10/Box
BPDS-13442-1012	Tannenbaum	10	12	10/Box
BPDS-13442-1013	Tannenbaum	10	13	10/Box
BPDS-13442-1014	Tannenbaum	10	14	10/Box
BPDS-13442-1015	Tannenbaum	10	15	10/Box

Plastic biliary stents-Single stent



REF	Stent Shape	Stent Diameter (Fr)	Stent Working Length (cm)	Packaging
BPDS-31993-0705	Double Pigtail	7	5	10/Box
BPDS-31993-0706	Double Pigtail	7	6	10/Box
BPDS-31993-0707	Double Pigtail	7	7	10/Box
BPDS-31993-0708	Double Pigtail	7	8	10/Box
BPDS-31993-0709	Double Pigtail	7	9	10/Box
BPDS-31993-0710	Double Pigtail	7	10	10/Box
BPDS-31993-0711	Double Pigtail	7	11	10/Box
BPDS-31993-0712	Double Pigtail	7	12	10/Box
BPDS-31993-0805	Double Pigtail	8.5	5	10/Box
BPDS-31993-0806	Double Pigtail	8.5	6	10/Box
BPDS-31993-0807	Double Pigtail	8.5	7	10/Box
BPDS-31993-0808	Double Pigtail	8.5	8	10/Box
BPDS-31993-0809	Double Pigtail	8.5	9	10/Box
BPDS-31993-0810	Double Pigtail	8.5	10	10/Box
BPDS-31993-0811	Double Pigtail	8.5	11	10/Box
BPDS-31993-0812	Double Pigtail	8.5	12	10/Box
BPDS-31993-1005	Double Pigtail	10	5	10/Box
BPDS-31993-1006	Double Pigtail	10	6	10/Box
BPDS-31993-1007	Double Pigtail	10	7	10/Box
BPDS-31993-1008	Double Pigtail	10	8	10/Box
BPDS-31993-1009	Double Pigtail	10	9	10/Box
BPDS-31993-1010	Double Pigtail	10	10	10/Box
BPDS-31993-1011	Double Pigtail	10	11	10/Box
BPDS-31993-1012	Double Pigtail	10	12	10/Box

Plastic biliary stents-Single stent



REF	Stent Shape	Stent Diameter (Fr)	Stent Working Length (cm)	Packaging
BPDS-31196-0705	Distal Pigtail	7	5	10/Box
BPDS-31196-0706	Distal Pigtail	7	6	10/Box
BPDS-31196-0707	Distal Pigtail	7	7	10/Box
BPDS-31196-0708	Distal Pigtail	7	8	10/Box
BPDS-31196-0709	Distal Pigtail	7	9	10/Box
BPDS-31196-0710	Distal Pigtail	7	10	10/Box
BPDS-31196-0711	Distal Pigtail	7	11	10/Box
BPDS-31196-0712	Distal Pigtail	7	12	10/Box
BPDS-31196-0805	Distal Pigtail	8.5	5	10/Box
BPDS-31196-0806	Distal Pigtail	8.5	6	10/Box
BPDS-31196-0807	Distal Pigtail	8.5	7	10/Box
BPDS-31196-0808	Distal Pigtail	8.5	8	10/Box
BPDS-31196-0809	Distal Pigtail	8.5	9	10/Box
BPDS-31196-0810	Distal Pigtail	8.5	10	10/Box
BPDS-31196-0811	Distal Pigtail	8.5	11	10/Box
BPDS-31196-0812	Distal Pigtail	8.5	12	10/Box
BPDS-31196-1005	Distal Pigtail	10	5	10/Box
BPDS-31196-1006	Distal Pigtail	10	6	10/Box
BPDS-31196-1007	Distal Pigtail	10	7	10/Box
BPDS-31196-1008	Distal Pigtail	10	8	10/Box
BPDS-31196-1009	Distal Pigtail	10	9	10/Box
BPDS-31196-1010	Distal Pigtail	10	10	10/Box
BPDS-31196-1011	Distal Pigtail	10	11	10/Box
BPDS-31196-1012	Distal Pigtail	10	12	10/Box

Plastic stent delivery system



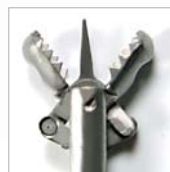
REF	Stent Diameter (Fr)	Compatible Stent Length (cm)	Introducer Working Length (cm)	Channel Size	Compatible Guidewire (in)	Packaging
BPDI-0712/22	7	<12	220	≥φ2.8mm	.035	2/Box
BPDI-0720/22	7	<20	220	≥φ2.8mm	.035	2/Box
BPDI-0812/22	8.5	<12	220	≥φ3.2mm	.035	2/Box
BPDI-0820/22	8.5	<20	220	≥φ3.2mm	.035	2/Box
BPDI-1012/22	10	<12	220	≥φ3.7mm	.035	2/Box
BPDI-1020/22	10	<20	220	≥φ3.7mm	.035	2/Box
BPDI-1112/22	11.5	<12	220	≥φ4.2mm	.035	2/Box
BPDI-1120/22	11.5	<20	220	≥φ4.2mm	.035	2/Box

Disposable Biopsy Forceps

The wide choice of disposable biopsy forceps ensures that you are perfectly equipped for every application. MICRO-TECH offers forceps with diameters of 1.8 mm, 2.3 mm and 3.0 mm in addition to lengths of 120, 180, 230 and 250 cm. Regardless of whether they are tapered, with or without a spike, coated or uncoated and with standard or toothed spoons – all models are characterised by their high reliability. The excellent cutting edge of the biopsy forceps allows you to take diagnostically conclusive tissue samples in a safe, easy manner.

Performance Characteristics:

- reliability
- very comfortable to use
- diagnostically conclusive biopsies
- wide product variety
- high quality riveted scissors joints
- working channel-friendly design



Toothed spoon



Rivet-hinge design

Rapid identification:

Jaw section protective cap:

- red – with spike
- yellow – without spike

Coating:

- yellow – paediatric forceps \varnothing 1.8 mm, 180 cm long
- orange – gastric forceps \varnothing 2.3 mm, 180 cm long
- blue – colon forceps \varnothing 2.3 mm, 230 cm long
- orange or blue – macro forceps \varnothing 3.0 mm, 180 und 230 cm long

Specifications:

Biopsy forceps – \varnothing 1.8 UNCOATED

REF	Jaw Style	Jaw Diameter (mm)	Needle	Channel Size (mm)	Working Length (cm)	Packaging
NBF01-11018120	Oval	1.8	W/O	$\geq\varnothing$ 2.0	120	10/Box
NBF01-11118120	Oval	1.8	W/	$\geq\varnothing$ 2.0	120	10/Box
NBF01-11018160	Oval	1.8	W/O	$\geq\varnothing$ 2.0	160	10/Box
NBF01-11118160	Oval	1.8	W/	$\geq\varnothing$ 2.0	160	10/Box
NBF01-11018180	Oval	1.8	W/O	$\geq\varnothing$ 2.0	180	10/Box
NBF01-11118180	Oval	1.8	W/	$\geq\varnothing$ 2.0	180	10/Box
NBF11-11018120	Alligator	1.8	W/O	$\geq\varnothing$ 2.0	120	10/Box
NBF11-11018160	Alligator	1.8	W/O	$\geq\varnothing$ 2.0	160	10/Box
NBF11-11018180	Alligator	1.8	W/O	$\geq\varnothing$ 2.0	180	10/Box

Biopsy forceps – \varnothing 1.8 COATED

REF	Jaw Style	Jaw Diameter (mm)	Needle	Channel Size (mm)	Working Length (cm)	Packaging
NBF02-11018120	Oval	1.8	W/O	$\geq\varnothing$ 2.0	120	10/Box
NBF02-11118120	Oval	1.8	W/	$\geq\varnothing$ 2.0	120	10/Box
NBF02-11018160	Oval	1.8	W/O	$\geq\varnothing$ 2.0	160	10/Box
NBF02-11118160	Oval	1.8	W/	$\geq\varnothing$ 2.0	160	10/Box
NBF12-11018120	Alligator	1.8	W/O	$\geq\varnothing$ 2.0	120	10/Box
NBF12-11018160	Alligator	1.8	W/O	$\geq\varnothing$ 2.0	160	10/Box

Biopsy forceps – \varnothing 2.3 UNCOATED

REF	Jaw Style	Jaw Diameter (mm)	Needle	Channel Size (mm)	Working Length (cm)	Packaging
NBF01-01023160	Round	2.3	W/O	$\geq\varnothing$ 2.8	160	10/Box
NBF01-01023230	Round	2.3	W/O	$\geq\varnothing$ 2.8	230	10/Box
NBF01-11023120	Oval	2.3	W/O	$\geq\varnothing$ 2.8	120	10/Box
NBF01-11123120	Oval	2.3	W/	$\geq\varnothing$ 2.8	120	10/Box
NBF01-11023160	Oval	2.3	W/O	$\geq\varnothing$ 2.8	160	10/Box
NBF01-11123160	Oval	2.3	W/	$\geq\varnothing$ 2.8	160	10/Box
NBF01-11023180	Oval	2.3	W/O	$\geq\varnothing$ 2.8	180	10/Box
NBF01-11123180	Oval	2.3	W/	$\geq\varnothing$ 2.8	180	10/Box
NBF01-11023230	Oval	2.3	W/O	$\geq\varnothing$ 2.8	230	10/Box
NBF01-11123230	Oval	2.3	W/	$\geq\varnothing$ 2.8	230	10/Box
NBF11-11023160	Alligator	2.3	W/O	$\geq\varnothing$ 2.8	160	10/Box
NBF11-11123160	Alligator	2.3	W/	$\geq\varnothing$ 2.8	160	10/Box
NBF11-11023180	Alligator	2.3	W/O	$\geq\varnothing$ 2.8	180	10/Box
NBF11-11123180	Alligator	2.3	W/	$\geq\varnothing$ 2.8	180	10/Box
NBF11-11023230	Alligator	2.3	W/O	$\geq\varnothing$ 2.8	230	10/Box
NBF11-11123230	Alligator	2.3	W/	$\geq\varnothing$ 2.8	230	10/Box

Biopsy forceps – \varnothing 2.3 COATED

REF	Jaw Style	Jaw Diameter (mm)	Needle	Channel Size (mm)	Working Length (cm)	Packaging
NBF03-01023160	Round	2.3	W/O	$\geq\varnothing$ 2.8	160	10/Box
NBF03-01023180	Round	2.3	W/O	$\geq\varnothing$ 2.8	180	10/Box
NBF03-01023230	Round	2.3	W/O	$\geq\varnothing$ 2.8	230	10/Box
NBF03-11023180	Oval	2.3	W/O	$\geq\varnothing$ 2.8	180	10/Box
NBF03-11123180	Oval	2.3	W/	$\geq\varnothing$ 2.8	180	10/Box
NBF03-11023230	Oval	2.3	W/O	$\geq\varnothing$ 2.8	230	10/Box
NBF03-11123230	Oval	2.3	W/	$\geq\varnothing$ 2.8	230	10/Box
NBF13-11023180	Alligator	2.3	W/O	$\geq\varnothing$ 2.8	180	10/Box
NBF13-11123180	Alligator	2.3	W/	$\geq\varnothing$ 2.8	180	10/Box
NBF13-11023230	Alligator	2.3	W/O	$\geq\varnothing$ 2.8	230	10/Box
NBF13-11123230	Alligator	2.3	W/	$\geq\varnothing$ 2.8	230	10/Box

Biopsy forceps – Large Capacity ϕ 2.4 COATED



REF	Jaw Style	Jaw Diameter (mm)	Needle	Channel Size (mm)	Working Length (cm)	Packaging
LCNBF13-10024180	Alligator	2.4	W/O	$\geq\phi$ 2.8	180	10/Box
LCNBF13-10124180	Alligator	2.4	W/	$\geq\phi$ 2.8	180	10/Box
LCNBF13-10024230	Alligator	2.4	W/O	$\geq\phi$ 2.8	230	10/Box
LCNBF13-10124230	Alligator	2.4	W/	$\geq\phi$ 2.8	230	10/Box

Biopsy forceps Jumbo – ϕ 3.0 UNCOATED



REF	Jaw Style	Jaw Diameter (mm)	Needle	Channel Size (mm)	Working Length (cm)	Packaging
NBF01-01130180	Oval	3.0	W/	$\geq\phi$ 3.2	180	10/Box
NBF01-01030230	Oval	3.0	W/O	$\geq\phi$ 3.2	230	10/Box
NBF01-01130230	Oval	3.0	W/	$\geq\phi$ 3.2	230	10/Box

Biopsy forceps Jumbo – ϕ 3.0 COATED



REF	Jaw Style	Jaw Diameter (mm)	Needle	Channel Size (mm)	Working Length (cm)	Packaging
NBF03-01030230	Oval	3.0	W/O	$\geq\phi$ 3.2	230	10/Box
NBF03-01130230	Oval	3.0	W/	$\geq\phi$ 3.2	230	10/Box
NBF13-01030230	Alligator	3.0	W/O	$\geq\phi$ 3.2	230	10/Box
NBF13-01130230	Alligator	3.0	W/	$\geq\phi$ 3.2	230	10/Box

Disposable hot biopsy forceps

MICRO-TECH unites several therapeutic working steps with its practical 2-in-1 solution. On one hand, the disposable hot biopsy forceps serve as a conventional hot forceps, removing small colonic polyps precisely and safely in active mode and taking diagnostically conclusive tissue samples in non-active mode.

On the other hand, they serve as an urgent measure for stopping bleeding, since the smallest lesions can be closed again at any time via coagulation current. The disposable hot biopsy forceps are unparalleled by other forceps in their suitability for treatment of patients with an increased risk of bleeding.



Performance Characteristics:

- reliability
- safety
- very comfortable to use
- high quality riveted scissors joints
- puncture-proof PTFE insulation
- 3-ring handle with Olympus power connection
- excellent cutting characteristics



Disposable hot biopsy forceps in endoscopic use.

Specifications:

Hot biopsy forceps



REF	Jaw Diameter (mm)	Channel Size (mm)	Working Length (cm)	Packaging
HBFO5-11018120	1.8	$\geq\phi$ 2.0	120	10/Box
HBFO5-11018160	1.8	$\geq\phi$ 2.0	160	10/Box
HBFO5-11018180	1.8	$\geq\phi$ 2.0	180	10/Box
HBFO5-11023120	2.3	$\geq\phi$ 2.8	120	10/Box
HBFO5-11023160	2.3	$\geq\phi$ 2.8	160	10/Box
HBFO5-11023180	2.3	$\geq\phi$ 2.8	180	10/Box
HBFO5-11023230	2.3	$\geq\phi$ 2.8	230	10/Box

Grasping Forceps

Grasping Forceps are used for endoscopic taking out foreign bodies from the human body.



Tooth

Rat Tooth

Griffin

Performance Characteristics:

- Excellent price-performance-ratio
- Adequate forceps opening width, available to take out large size foreign bodies
- Ergonomic handle design with the opening/closing operation of the forceps cups by only one hand.

Specifications:

Grasping forceps – ϕ 2.3 UNCOATED

REF	Jaw Diameter (mm)	Channel Size (mm)	Opening Width (mm)	Jaw Style	Working Length (cm)	Packaging
NGF01-11023180	2.3	$\geq\phi$ 2.8	6.3	Rat Tooth	180	10/Box
NGF01-11023230	2.3	$\geq\phi$ 2.8	6.3	Rat Tooth	230	10/Box
NGF11-11023180	2.3	$\geq\phi$ 2.8	8.1	Alligator	180	10/Box
NGF11-11023230	2.3	$\geq\phi$ 2.8	8.1	Alligator	230	10/Box

Grasping forceps – ϕ 2.3 COATED

REF	Jaw Diameter (mm)	Channel Size (mm)	Opening Width (mm)	Jaw Style	Working Length (cm)	Packaging
NGF03-11023180	2.3	$\geq\phi$ 2.8	6.3	Rat Tooth	180	10/Box
NGF03-11023230	2.3	$\geq\phi$ 2.8	6.3	Rat Tooth	230	10/Box
NGF13-11023180	2.3	$\geq\phi$ 2.8	8.1	Alligator	180	10/Box
NGF13-11023230	2.3	$\geq\phi$ 2.8	8.1	Alligator	230	10/Box
NGF33-11023180	2.3	$\geq\phi$ 2.8	8.1	Griffin	180	10/Box
NGF33-11023230	2.3	$\geq\phi$ 2.8	8.1	Griffin	230	10/Box

Grasping forceps – ϕ 1.8 COATED

REF	Jaw Diameter (mm)	Channel Size (mm)	Opening Width (mm)	Jaw Style	Working Length (cm)	Packaging
NGF32-11018120	1.8	$\geq\phi$ 2.0	8.1	Griffin	120	10/Box
NGF32-11018180	1.8	$\geq\phi$ 2.0	8.1	Griffin	180	10/Box

Polypectomy Snares

In order to make the removal of polyps in everyday hospital routine as efficient as possible, MICRO-TECH has developed a new program of disposable polypectomy snares which perfectly combines quality with cost effectiveness.

Each oval snare is made of specially stranded wire, which convinces by its good radial force, high dimensional stability and precise cutting properties. The 3-ring-handle gives you a secure hold and transmits every movement reliably to the snare.

The power connection is mounted independent from the 2-ring conductor on the distal end of the handpiece. This prevents the connected power cord from moving when the snare is opened and closed, which facilitates its handling even more.



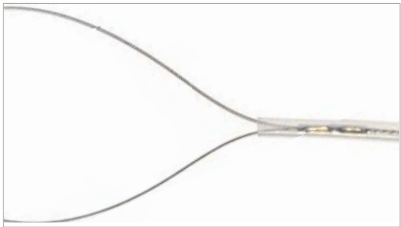
Performance Characteristics:

- very comfortable to use
- reliable and safe
- innovative power connection
- ergonomic 3-ring handle
- excellent cutting characteristics
- high strength of shape



3-ring handle with power connection

Cold Snares



Easy and safe operation

The special stranded wire of DailySnare endows the snare with the radial force it needs to open and be controlled in any position, easily and reliably. DailySnare has proved its worth as a reliable solution in daily routine work owing to its enormous dimensional stability and good cutting properties.



The snare offers distinctly more operating comfort thanks to a simple as congenial idea: The power connection has been separated from the 2-ring conductor and can swivel around its own axis. This allows for a smooth opening of the snare even if the power cord is connected. The power cord is thus kept away from your hand.

Specifications:

Snares - Flexible

REF	Snare Shape	Snare Diameter (mm)	Sheath O.D. (mm)	Channel Size (mm)	Working Length (cm)	Packaging
PFS01-01023230	Oval	10	2.3	≥φ2.8	230	10/Box
PFS01-01523230	Oval	15	2.3	≥φ2.8	230	10/Box
PFS01-02023230	Oval	20	2.3	≥φ2.8	230	10/Box
PFS01-02423230	Oval	24	2.3	≥φ2.8	230	10/Box
PFS01-03023230	Oval	30	2.3	≥φ2.8	230	10/Box
PFS01-03623230	Oval	36	2.3	≥φ2.8	230	10/Box

Snares - Stiff

REF	Snare Shape	Snare Diameter (mm)	Sheath O.D. (Fr)	Channel Size (mm)	Working Length (cm)	Packaging
PFS02-01023230	Oval	10	2.3	≥φ2.8	230	10/Box
PFS02-01523230	Oval	15	2.3	≥φ2.8	230	10/Box
PFS02-02023230	Oval	20	2.3	≥φ2.8	230	10/Box
PFS02-02423230	Oval	24	2.3	≥φ2.8	230	10/Box
PFS02-03023230	Oval	30	2.3	≥φ2.8	230	10/Box
PFS02-03623230	Oval	36	2.3	≥φ2.8	230	10/Box
PFS01-51523230*	Diamond	15	2.3	≥φ2.8	230	10/Box
PFS01-11523230	Hexagonal	15	2.3	≥φ2.8	230	10/Box



Product Description:

- Designed for diminutive polypectomy.
- Specially designed thin loop wires allowing for a clean guillotine cut.
- Two loop sizes available.

Specifications:

Cold snares

REF	Snare Shape	Snare Diameter (mm)	Sheath O.D. (Fr)	Channel Size (mm)	Working Length (cm)	Packaging
CS3-11023230	Diamond	10	7	≥φ2.8	230	10/Box
CS3-11523230	Diamond	15	7	≥φ2.8	230	10/Box

Injection Needles

Specifications:

Injection needles

REF	Needle Gauge	Maximum Needle Extension Length (mm)	Sheath O.D. (mm)	Working Length (cm)	Packaging
IN02-224231802	22G	4	2.3	180	10/Box
IN02-224232002	22G	4	2.3	200	10/Box
IN02-224232302	22G	4	2.3	230	10/Box
IN02-225231802	22G	5	2.3	180	10/Box
IN02-225232002	22G	5	2.3	200	10/Box
IN02-225232302	22G	5	2.3	230	10/Box
IN02-226231802	22G	6	2.3	180	10/Box
IN02-226232002	22G	6	2.3	200	10/Box
IN02-226232302	22G	6	2.3	230	10/Box
IN02-254231802	25G	4	2.3	180	10/Box
IN02-254232002	25G	4	2.3	200	10/Box
IN02-254232302	25G	4	2.3	230	10/Box
IN02-255231802	25G	5	2.3	180	10/Box
IN02-255232002	25G	5	2.3	200	10/Box
IN02-255232302	25G	5	2.3	230	10/Box
IN02-256231802	25G	6	2.3	180	10/Box
IN02-256232002	25G	6	2.3	200	10/Box
IN02-256232302	25G	6	2.3	230	10/Box



Indications for endoscopy to introduce a sclerosing agent or vasoconstrictor into selected sites to control actual or potential bleeding lesions in the digestive system; and the injection of saline to aid in Endoscopic Mucosal Resection (EMR), polypectomy procedures and to control non-variceal hemorrhage.

Performance Characteristics:

- Lock to ensure that it would not accidentally extend during insertion to damage the scope and to have a stable needle penetration.
- Needle release button design, gently press the button to return the needle fully into the sheath for protecting the endoscope from any damage.
- Ergonomic handle design: complete needle insertion and with drawal with one hand.



Indigo carmine

Occasionally used as a food dye, indigo carmine can be useful in GI procedures as a contrast stain to temporarily mark or highlight tissue. Blue Beacon GI marker can be diluted and introduced to the irrigation, sprayed or injected around the area of interest.

Available in 15 ml vial or 5 ml syringe, the 0.4% Indigo Carmine solution is supplied sterile, 5 syringes or 10 vials per box.



This solution is NOT FOR INTRAVENOUS OR INTRAMUSCULAR INJECTION. It is a single use device indicated for temporary marking of the GI tract.



Specifications:

Cleaning brush

REF	Features	Packaging
P-DYZ-04-05	Indigo Carmine pre-filled 5ml syringe 0.4%	5/Box
DYZ-04-15	Indigo Carmine 15ml bottle 0.4%	10/Box

Disposable Cleaning Brushes

The disposable cleaning brushes from MICRO-TECH ensure a perfectly cleaned endoscope, thus reducing the risk of cross-contamination to a minimum.



Performance Characteristics:

- 2 brush heads for time-saving cleaning
- protective beads on the brush heads
- brushes made of resistant nylon
- individually hygienically packed

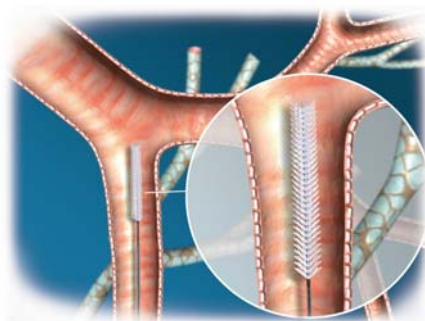
Specifications:

Cleaning brush

REF	Brush Type	Brush Diameter (mm)	Brush Length (mm)	Catheter O.D. (mm)	Channel Size (mm)	Working Length (cm)	Valve Brush
CB13-50120/01	Standard	φ5	20	N/A	N/A	N/A	Valve Brush
CB18-5050/16	Standard	φ5	20	φ1.8	≥φ2.0	160	N/A
CB18-5050/18	Standard	φ5	20	φ1.8	≥φ2.0	180	N/A
CB18-5050/23	Standard	φ5	20	φ1.8	≥φ2.0	230	N/A
CB18-T5050/23	Tapered	φ5	20	φ1.8	≥φ2.0	230	N/A
CB18-T5050/23-A	Tapered	φ5	20	φ1.8	≥φ2.0	230	With Valve Brush
CB18-T5050/23-B	Tapered	φ5	20	φ1.8	≥φ2.0	230	With Valve Brush
CB23-5050/18	Tapered	φ5	20	φ2.3	≥φ2.8	180	N/A
CB23-5050/23	Tapered	φ5	20	φ2.3	≥φ2.8	230	N/A
CB23-T5050/23	Tapered	φ5	20	φ2.3	≥φ2.8	230	N/A

Disposable Cytology Brushes

The MICRO-TECH cytology brush can be very easily pushed forward to the desired site through the endoscope and the lesion can then actually be brushed off without effort. The thin bristles enable a tissue-sparing cytologic smear. The plastic tube and the distal ball for closure protect the tissue sample when the device is retracted. A potential contamination of the sample or even a loss of sample is thus excluded.



Performance Characteristics:

- thin brushes for an optimal collection of cells
- includes plastic tube and metal head for closure
- for endoscopes with a working channel diameter above 2.0 mm
- sterile single packaging

Specifications:

Cytology brush

REF	Brush Diameter (mm)	Brush Length (mm)	Catheter O.D. (mm)	Channel Size (mm)	Working Length (cm)	Packaging
CYB-18S-16C	1.8	12	2.3	≥φ2.8	160	20/Box
CYB-18S-18C	1.8	12	2.3	≥φ2.8	180	20/Box
CYB-24S-12C	2.4	12	1.8	≥φ2.0	120	20/Box
CYB-24S-18C	2.4	12	2.3	≥φ2.8	180	20/Box
CYB-24S-24C	2.4	12	2.3	≥φ2.8	240	20/Box
CYB-30S-12C	3.0	12	1.8	≥φ2.0	120	20/Box
CYB-30S-16C	3.0	12	2.3	≥φ2.8	160	20/Box
CYB-30S-18C	3.0	12	2.3	≥φ2.8	180	20/Box
CYB-30S-23C	3.0	12	2.3	≥φ2.8	230	20/Box
CYB-30S-24C	3.0	12	2.3	≥φ2.8	240	20/Box
CYB-40S-12C	4.0	12	1.8	≥φ2.0	120	20/Box
CYB-40S-16C	4.0	12	2.3	≥φ2.8	160	20/Box
CYB-40S-18C	4.0	12	2.3	≥φ2.8	180	20/Box
CYB-40S-24C	4.0	12	2.3	≥φ2.8	240	20/Box
CYB-50S-23C	5.0	12	2.3	≥φ2.8	230	20/Box

Polyp Trap



Performance Characteristics:

- Individual packaging
- Easy in-line installation
- Multi-chamber allows for multiple samples
- Visual markers for each chamber
- Single Patient Use

Specifications:

Polyp trap

REF	Description	Packaging
BBP-50	50*50	25/Box

Disposable Bite Blocks

Different models are available: standard, pediatric and mouthguards with a special a traumatic design.



Performance Characteristics:

- superior design
- smooth skin to enhance patient comfort
- large and flexible openings allowing the scope passage and finger-assisting simultaneously
- strap available to improve safety and convenience

Specifications:

Bite block

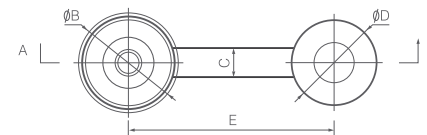
REF	Indication	Color	Packaging
AC01-103.A	For Adult	Blue	100/Box
AC01-103.P	For Child	Light Blue	100/Box

Working Channel Valves



Performance Characteristics:

- Used for tucking in the entry of endoscope channel
- Prevent the contents in working channel from reflux without obstructing normal endoscopic procedures
- The channel valves fit on Olympus and Pentax endoscopes



Specifications:

Working Channel Valves

REF	Description	Packaging
AC03-101.O	Blue, compatible with OLYMPUS/Fujinon endoscopes	100/Box
AC03-101.P	Red, compatible with Pentax endoscopes	100/Box

Multiple Band Ligator Set



Specifications:

Multiple band ligator set



REF	Required Working Channel (mm)	Scope O.D. (mm)	Bands / Ligating Unit	Band Type	Packaging
MBLS-7F-NL	2.8	9.4 - 13.0	7pcs	Latex Free	1/Box
MBLS-6F-NL	2.8	9.4 - 13.0	6pcs	Latex Free	1/Box
MBLS-4F-NL	2.8	9.4 - 13.0	4pcs	Latex Free	1/Box
MBLS-3F-NL	2.8	9.4 - 13.0	3pcs	Latex Free	1/Box
MBLS-7F	2.8	9.4 - 13.0	7pcs	Latex	1/Box
MBLS-6F	2.8	9.4 - 13.0	6pcs	Latex	1/Box
MBLS-4F	2.8	9.4 - 13.0	4pcs	Latex	1/Box
MBLS-3F	2.8	9.4 - 13.0	3pcs	Latex	1/Box

REF	Required Working Channel (mm)	Scope O.D. (mm)	Bands / Ligating Unit	Band Type	Packaging
MBLS-XL-7F-NL	2.8	11.0 - 14.0	7pcs	Latex Free	1/Box
MBLS-XL-6F-NL	2.8	11.0 - 14.0	6pcs	Latex Free	1/Box
MBLS-XL-4F-NL	2.8	11.0 - 14.0	4pcs	Latex Free	1/Box
MBLS-XL-3F-NL	2.8	11.0 - 14.0	3pcs	Latex Free	1/Box
MBLS-XL-7F	2.8	11.0 - 14.0	7pcs	Latex	1/Box
MBLS-XL-6F	2.8	11.0 - 14.0	6pcs	Latex	1/Box
MBLS-XL-4F	2.8	11.0 - 14.0	4pcs	Latex	1/Box
MBLS-XL-3F	2.8	11.0 - 14.0	3pcs	Latex	1/Box

Unit Conversion Table

French (F)	Inch (in)	Millimetre (mm)
3F	0.039	1
4F	0.053	1.35
5F	0.066	1.67
6F	0.079	2
7F	0.092	2.3
8F	0.105	2.7
9F	0.118	3
10F	0.131	3.3
11F	0.144	3.7
12F	0.158	4
13F	0.17	4.3
14F	0.184	4.7
15F	0.197	5
16F	0.21	5.3
17F	0.223	5.7
18F	0.236	6
19F	0.249	6.3
20F	0.263	6.7
21F	0.268	7.3
24F	0.31	8
26F	0.341	8.7
28F	0.367	9.3
30F	0.393	10
32F	0.419	10.7
34F	0.445	11.3

